



Snow and Company, Inc.
469 NW Bowdoin Place
Seattle, WA 98107

Company History

- Snow and Company has been in existence for over 20 years, primarily as a repair and re-fit company on the Ballard waterway in Seattle, WA.
- After hundreds of repairs on aluminum boats Snow started building small vessels for the fishing and aquaculture industry around 2010 with a vision to grow into a world class shipyard. In 2017 Snow and Co. won a contract with the US Navy for (x26) 41' Work Boat Large vessels.
- After Vigor Kvichak moved to Vancouver, WA and decided to lease the facility at 469 NW Bowdoin where the last two Savannah Pilot vessels were built, Snow and Co. moved into the facility in April 2020.
- Many of the talented boat builders that had worked at Kvichak over the years and were influential in the high end construction of the all the Kvichak Pilot vessels stayed and went to work with Snow and Co.

The Team

- Tim Kolb, VP General Manager – Former Kvichak
- Brett Snow, President – Snow and Co.
- Paul Torrey, Project / Finance Manager – Snow and Co. / Former Todd / Vigor Shipyard, finance, purchasing, PM

- Jim Gow, PM consultant – Former Kvichak
- Dan Thrush, Eng lead – Former Kvichak

- Jason Buddle, Production Manager – Former Kvichak
- Ernie Marshall, Fabrication lead – Former Kvichak (built most of the Kvichak Camarc Pilot vessels)
- Navin Chand, Mechanical lead – Former Kvichak (built all of the Kvichak Camarc Pilots vessels)



New Construction

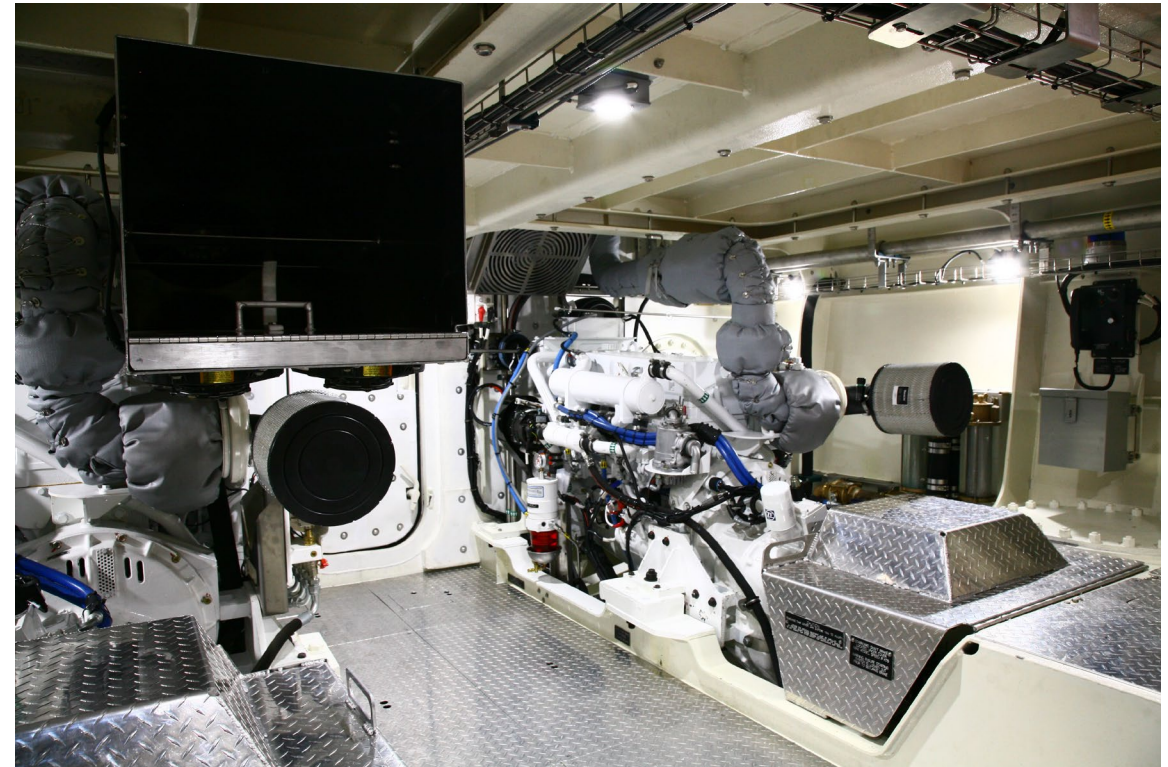
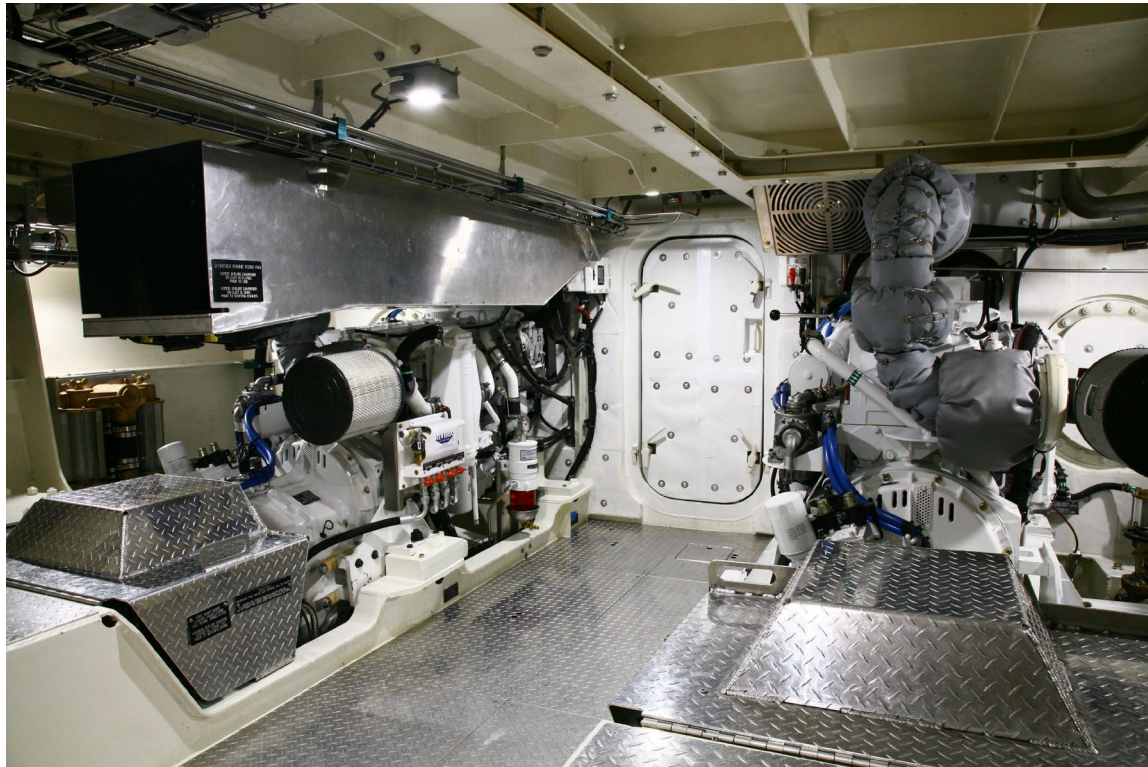
41' US Navy Work
Boat Large

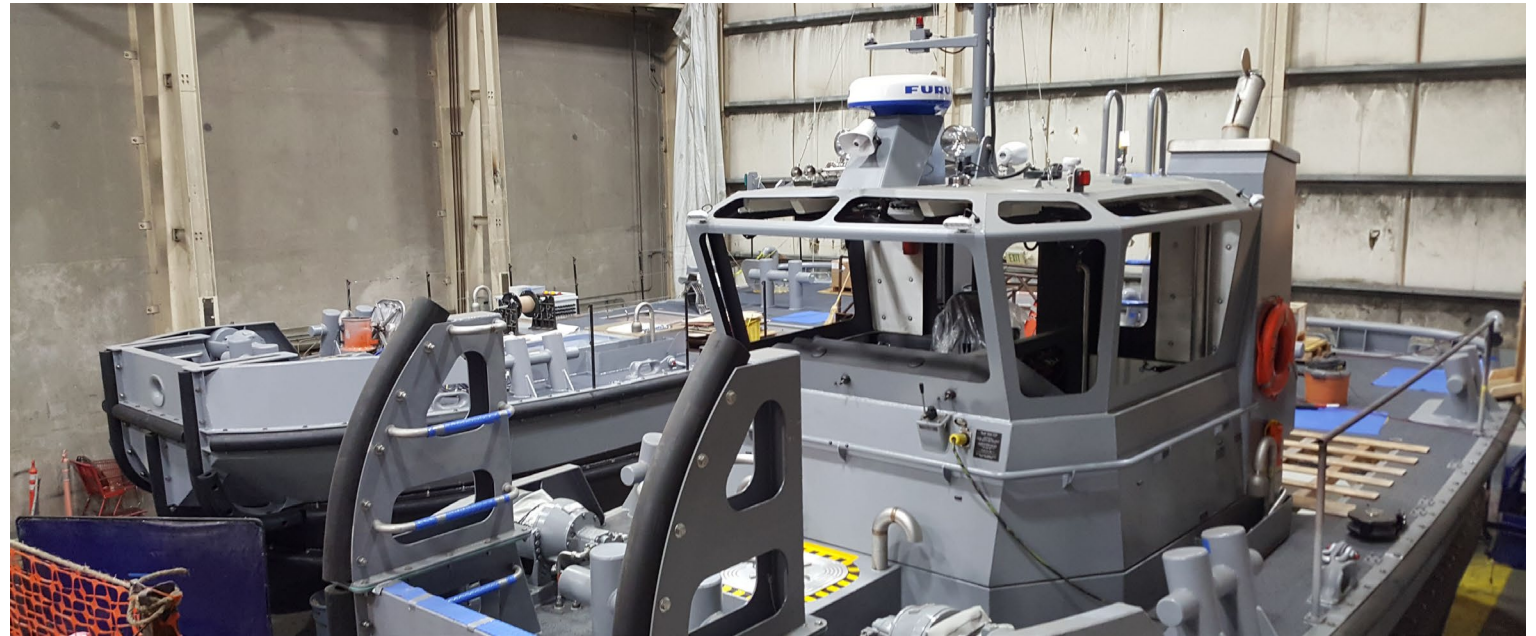
IDIQ contract for up
to 26 vessels



Navy Work
Boat Large
control
console

Navy Work Boat Large Engine Room





Current Projects:

- Navy Work Boat Large under construction
 - Aluminum superstructure production line shown to the left
-

Steel hull Tug boat with aluminum top house





Repair and Re-fit:

Seen here is a new wheelhouse
built by Snow and Co. for 98'
F/V Arctic Ram



Complete Rebuild of 65' Combi Tug for Curtin Maritime



Complete Wheelhouse
and bow replacement on
the F/V Theresa Marie

- Interior Wheelhouse of Theresa Marie





Summary

- Same Facility as previous pilot vessels built
- Same Team plus great new additions from Snow and Co.
- Camarc - Same designer of previous pilot vessels built