

BOPC Received
3 - 22 - 2021



SAN FRANCISCO BAR PILOTS

Section 237(d) Data

January 1, 2020 to December 31, 2020

Prepared by
Bruce Clarke

March 18, 2021

Table of Contents

California Code of Regulations, Title 7, Division 2, Section 237

	Section 237(d) definitions and purpose	2
237(d)(1, 2,10)	Total number of vessels moved, pilots assigned and MRP Exceptions	4
237(d)(3)	January 2020 Number of pilots assigned to move vessels each day	5
237(d)(3)	February 2020 Number of pilots assigned to move vessels each day	6
237(d)(3)	March 2020 Number of pilots assigned to move vessels each day	7
237(d)(3)	April 2020 Number of pilots assigned to move vessels each day	8
237(d)(3)	May 2020 Number of pilots assigned to move vessels each day	9
237(d)(3)	June 2020 Number of pilots assigned to move vessels each day	10
237(d)(3)	July 2020 Number of pilots assigned to move vessels each day	11
237(d)(3)	August 2020 Number of pilots assigned to move vessels each day	12
237(d)(3)	September 2020 Number of pilots assigned to move vessels each day	13
237(d)(3)	October 2020 Number of pilots assigned to move vessels each day	14
237(d)(3)	November 2020 Number of pilots assigned to move vessels each day	15
237(d)(3)	December 2020 Number of pilots assigned to move vessels each day	16
237(d)(4, 5, 6)	Number of bar crossings, bay moves and river moves	17
237(d)(7)	Average draft of piloted vessels	18
237(d)(8)	Average gross tonnage of piloted vessels	19
237(d)(9)	Number of pilots reported sick and number of days was unable to pilot	20
237(d)(10)	MRP Exceptions: No. of times pilots worked with less than 12 hrs. rest	21
237(d)(11)	Number of days pilots were engaged in Board-mandated training	23
237(d)(12)	Number of pilot days engaged in administrative duties	24
	Pilots pulled from the regular rotation for multi-day pilotage	25

SECTION 237(d) DEFINITIONS AND PURPOSE

Section 237(d)(1) Total Number of Vessels Moved

Definition: Number of vessel transits each month. Each transit may require more than one pilot assigned. A break down by move type is provided in 237(d)(4, 5, 6).

Purpose: A measure of the amount of ships moved.

Section 237(d)(2) Total Number of Pilots Assigned

Definition: The total number of times pilots were called to work each month. During the work day, a pilot may be assigned to pilot one or more vessels.

Purpose: A measure of the number of pilots required to move vessels.

Section 237(d)(3) Number of Pilots Assigned to Move Vessels Each Day

Definition: The actual number of pilots that were called to work each particular day.

Purpose: Analysis of the number of pilots dispatched to work each day (especially when viewed in graphical form) helps determine if there are any short term or long term trends in the number of pilots needed from day to day.

Section 237(d)(4, 5, 6) Number of Bar Crossings, Bay Moves and River Moves

Definition: A break down of the 3 major types of vessels moves each month. 237(d)(1) is the sum of the 3 types of moves.

237(d)(4) Bar Crossings – Moves between sea and docks or anchorages within the Bay.

237(d)(5) Bay Moves – Moves between docks or anchorages within the Bay.

237(d)(6) River Moves – Moves to or from Stockton or Sacramento.

Purpose: A measure of the amount of ships moved.

Section 237(d)(7, 8) Average Draft and Gross Tonnage of Piloted Vessels

Definition: The average draft (Section 237(d)(7)) and gross tonnage (section 237(d)(8)) of vessels each month.

Purpose: A measure of the size of vessels moved.

Section 237(d)(9) Number of Pilot Days Pilot Reported Sick or Injured

Definition: The total number of calendar days pilots were unavailable to work due to sickness or injury each month.

Purpose: A measure of the number of pilots removed from the roster and unavailable to pilot due to sickness or injury.

Section 237(d)(10) MRP Exceptions: Number of Times Pilots Resumed Duties with Less Than 12 Hours Rest

Definition: The number of times pilots returned to work with less than 12 hours rest from their previous piloting duties. Also included is supporting data to help try and explain why the less than 12 hours rest period occurred. In general, they occur because of an exceptionally busy day, because there was not a full roster of pilots available or a combination of both.

Note: 12 hours is based on the conclusions of the 1986 Manalytics study which stated that 12 hours should be a minimum rest period.

Purpose: A measure of the match between the number of pilots needed and the number of vessels being moved.

Section 237(d)(11) Number of Days Pilots Were Engaged in Board Mandated Training

Definition: The total number of calendar days pilots were engaged in commission mandated training each month.

Purpose: A measure of the number of pilots removed from the roster and unavailable to pilot due to training.

Section 237(d)(12) Number of Days Pilots Were Engaged in Administrative Duties

Definition: The total number of 8 hour days pilots were engaged in administrative duties with a break down by task. Quid Pro Quo are those days pilots were removed from the piloting roster or earned comp time to perform the required administrative duties. Pro Bono days are those days that the administrative duties were performed on the pilots “own time” without shorting the piloting roster or earning comp time.

Purpose: A measure of the number of pilots removed from the roster and unavailable to pilot due to administrative duties.

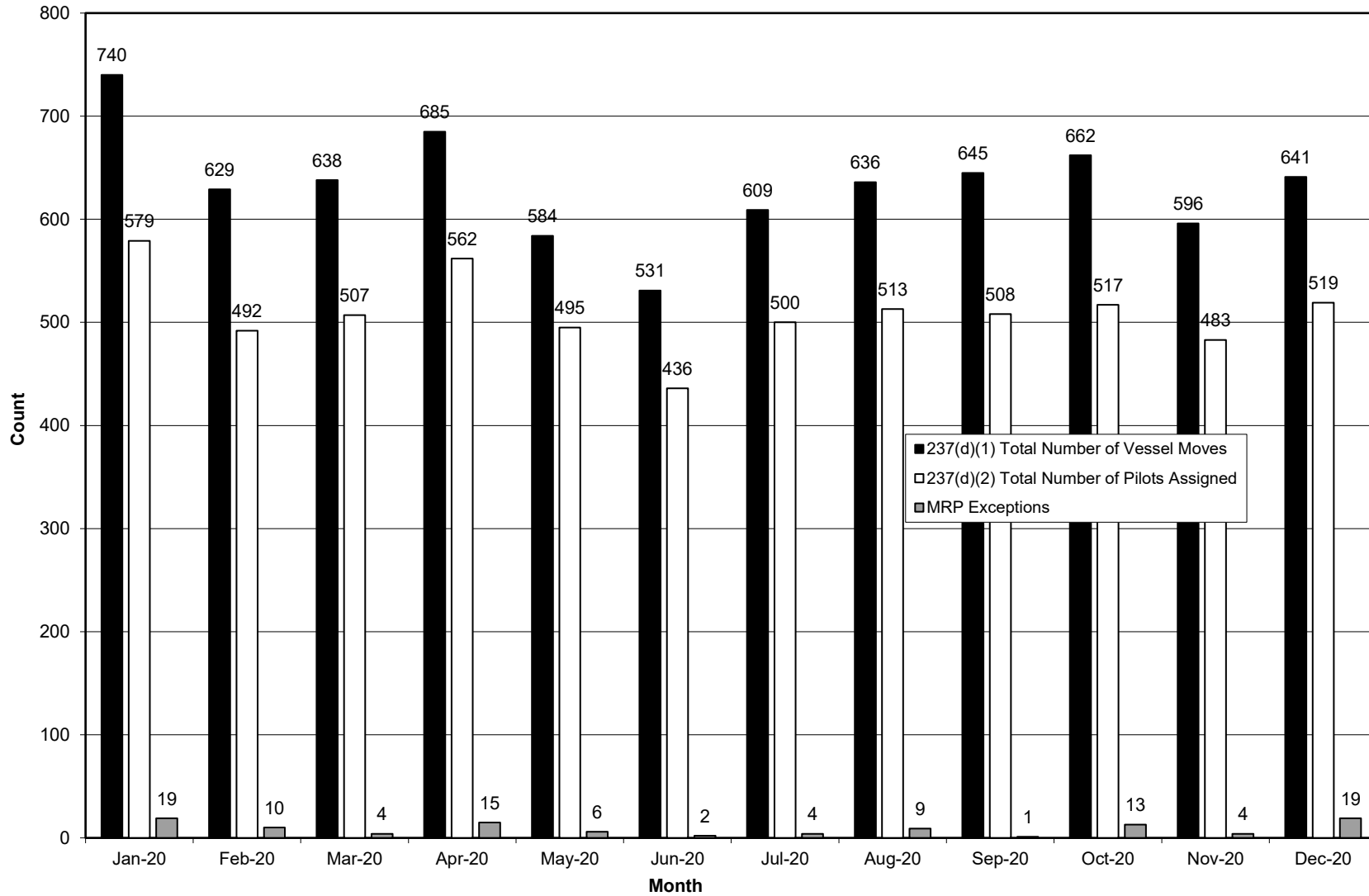
Pilots pulled from the regular rotation for multi-day pilotage jobs.

Note: Multi-day pilotage was extremely unusual when section 237(d) was written. It has since become more relevant. As such, this information is included as a supplemental.

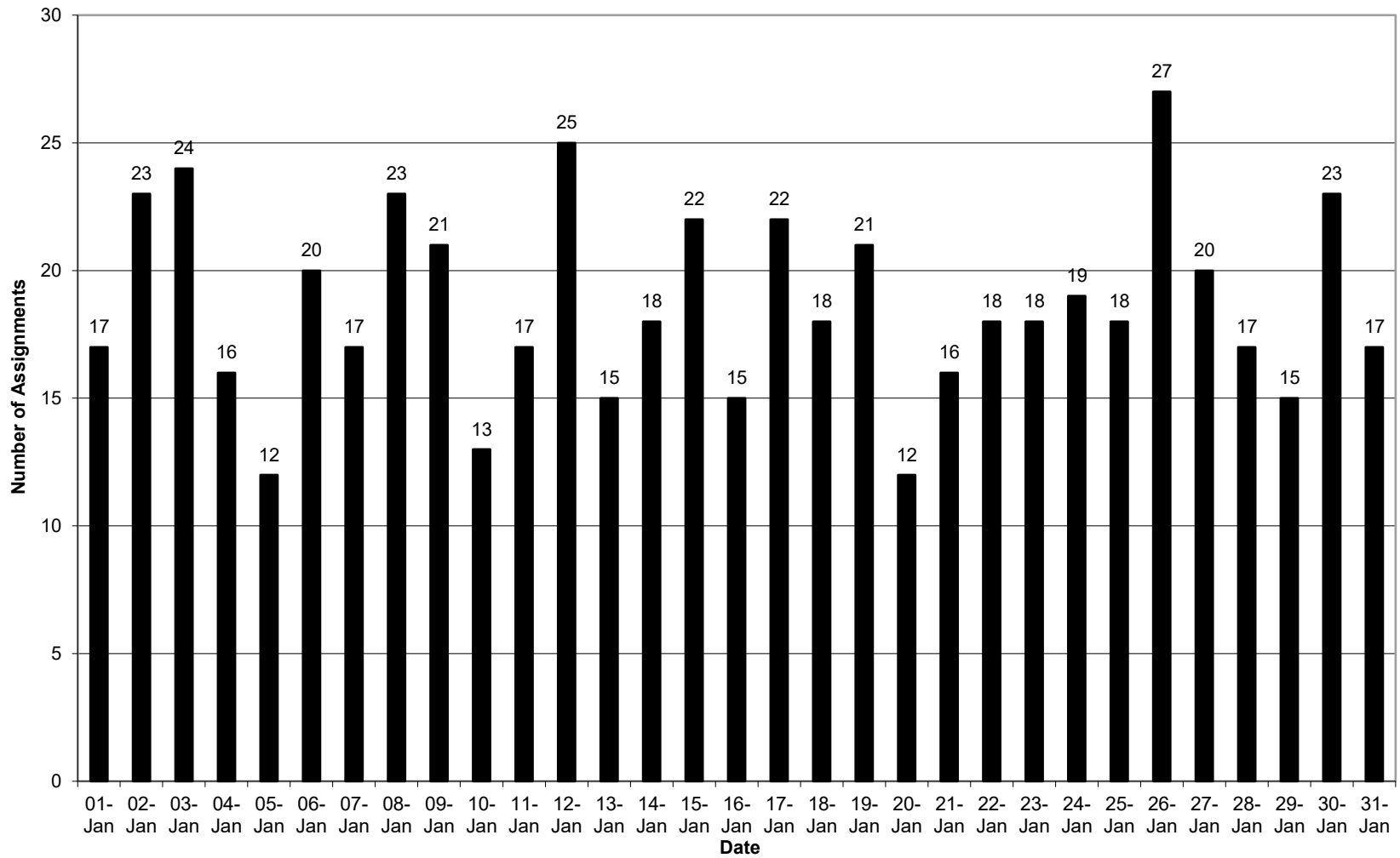
Definition: The number and length of jobs for vessels requiring the pilot to stay aboard for extended periods of time. This occurs when a normal pilot boarding / disembarking can not be made.

Purpose: A measure of pilots removed from the roster and unavailable to pilot other vessels due to their extended stay aboard.

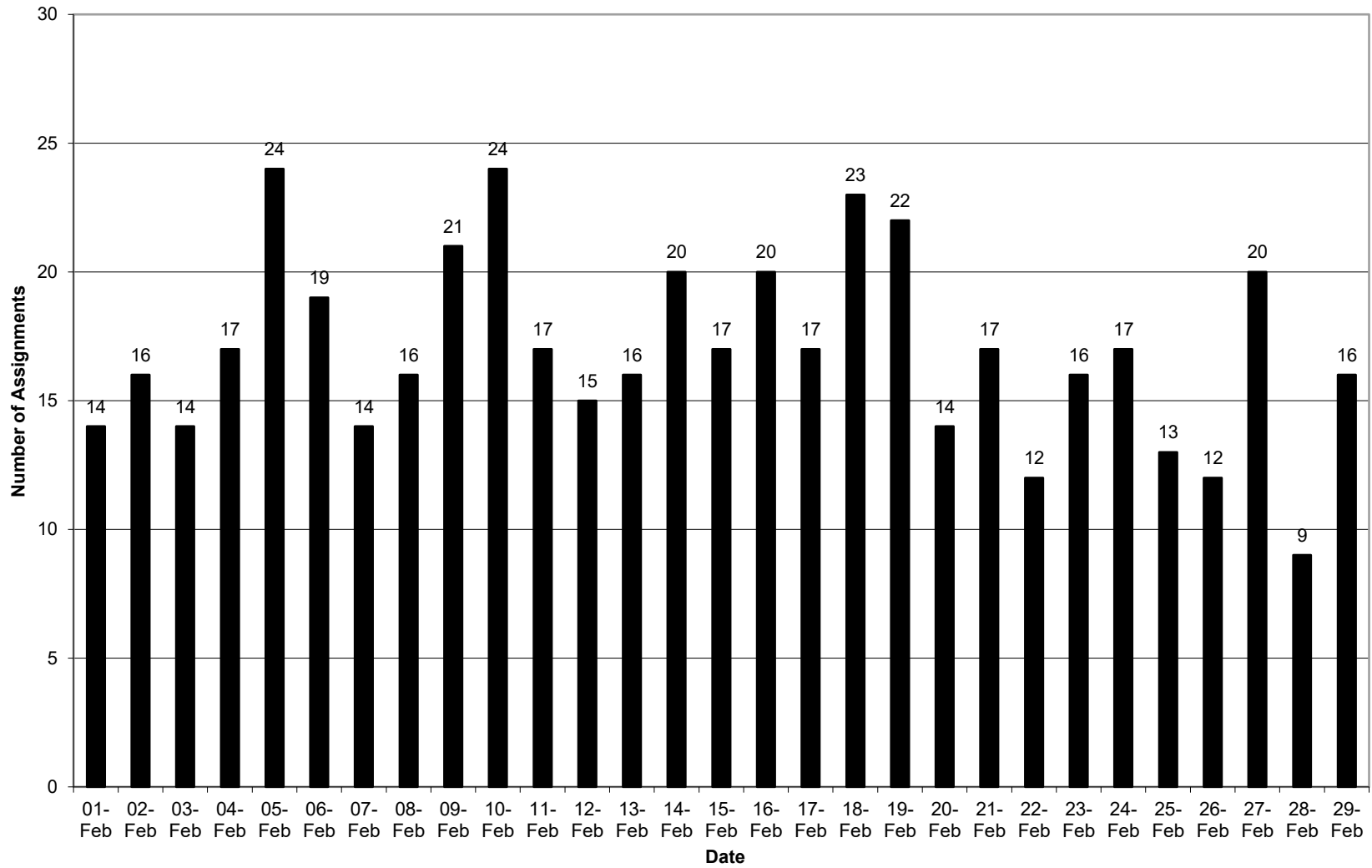
Section 237(d)(1, 2,10)
Total Number of Vessels Moved, Pilots Assigned and MRP Exceptions
January 1 to December 31, 2020



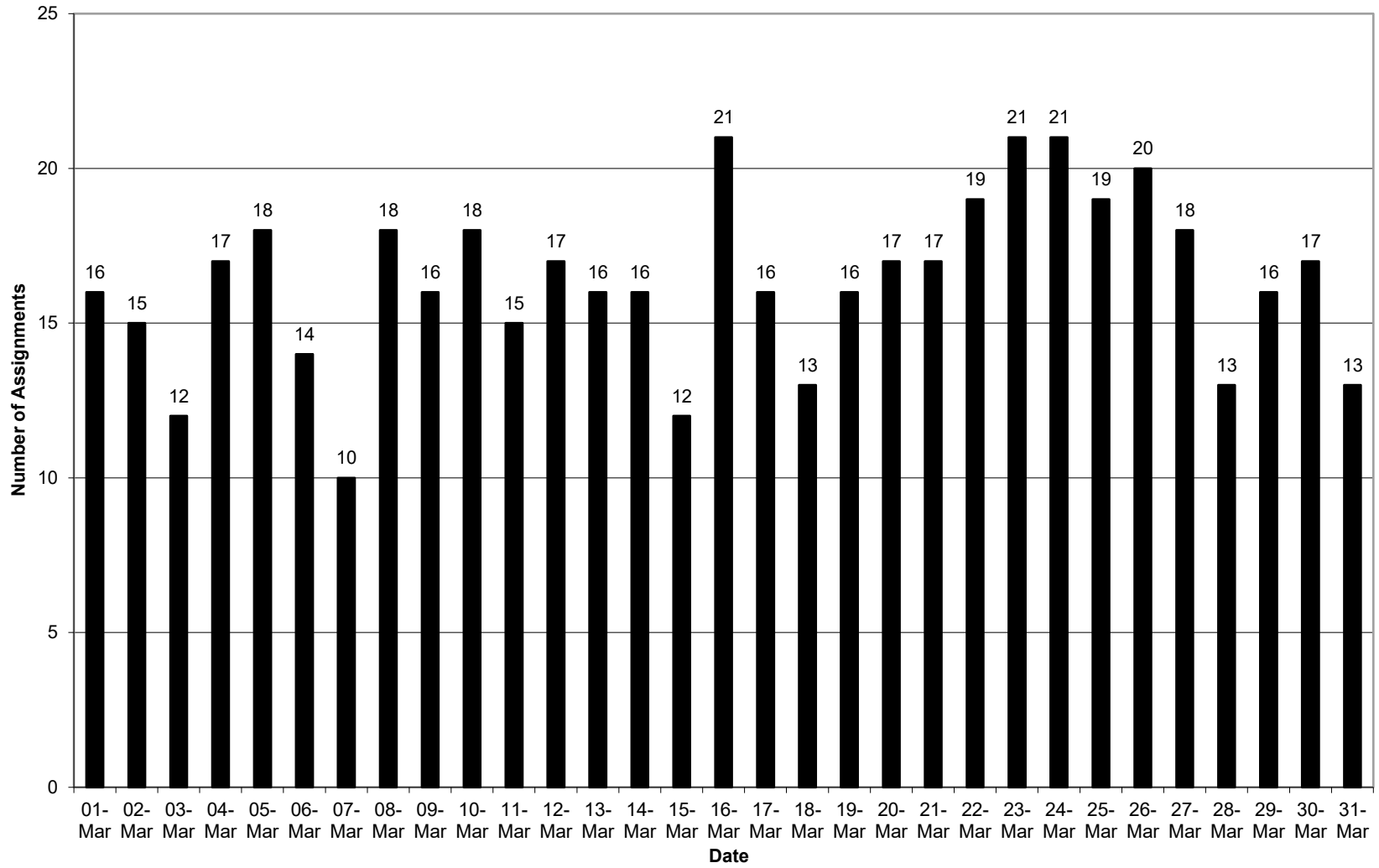
Section 237(d)(3)
Assignments Per Day
January 2020



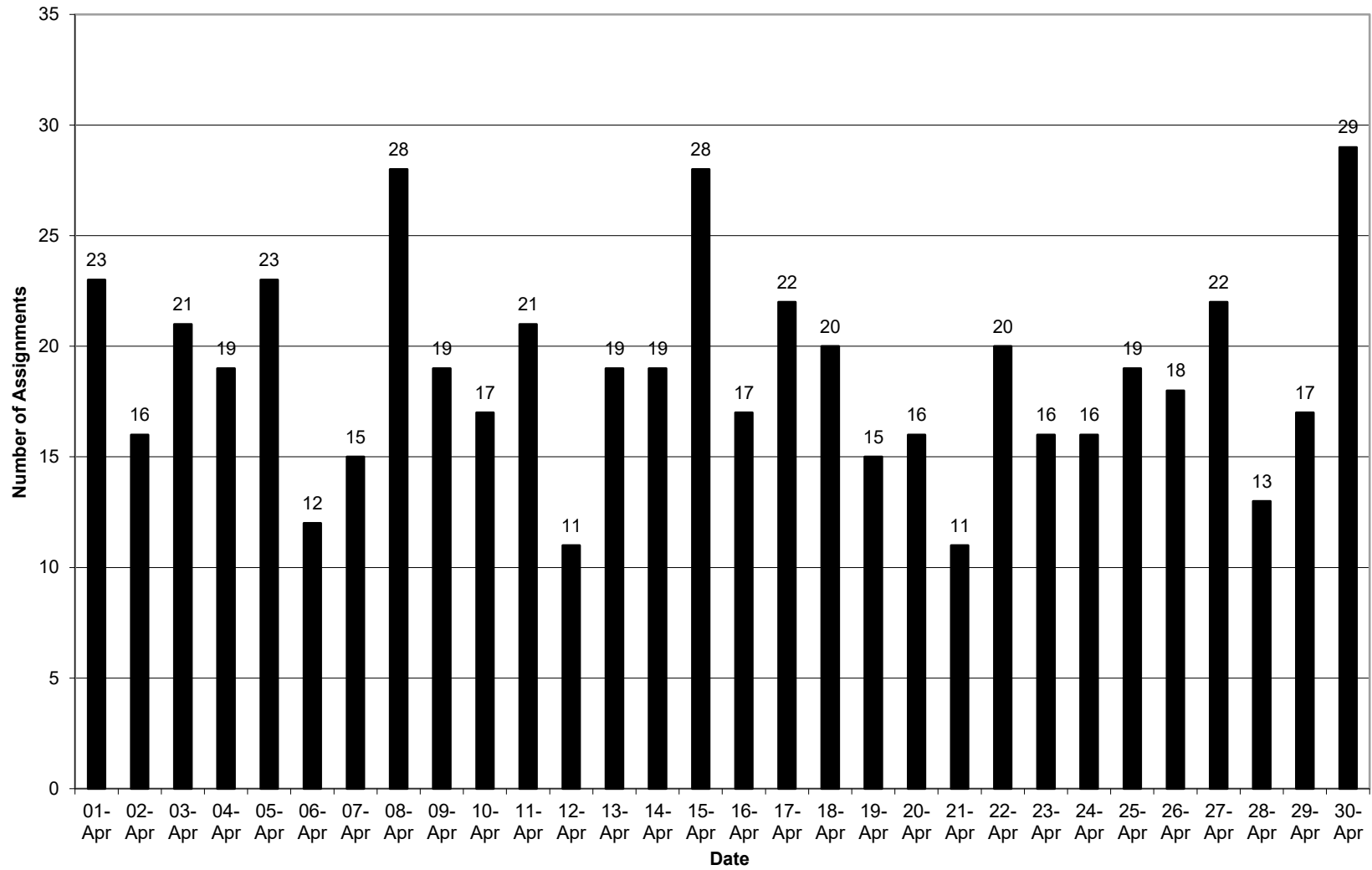
Section 237(d)(3)
Assignments Per Day
February 2020



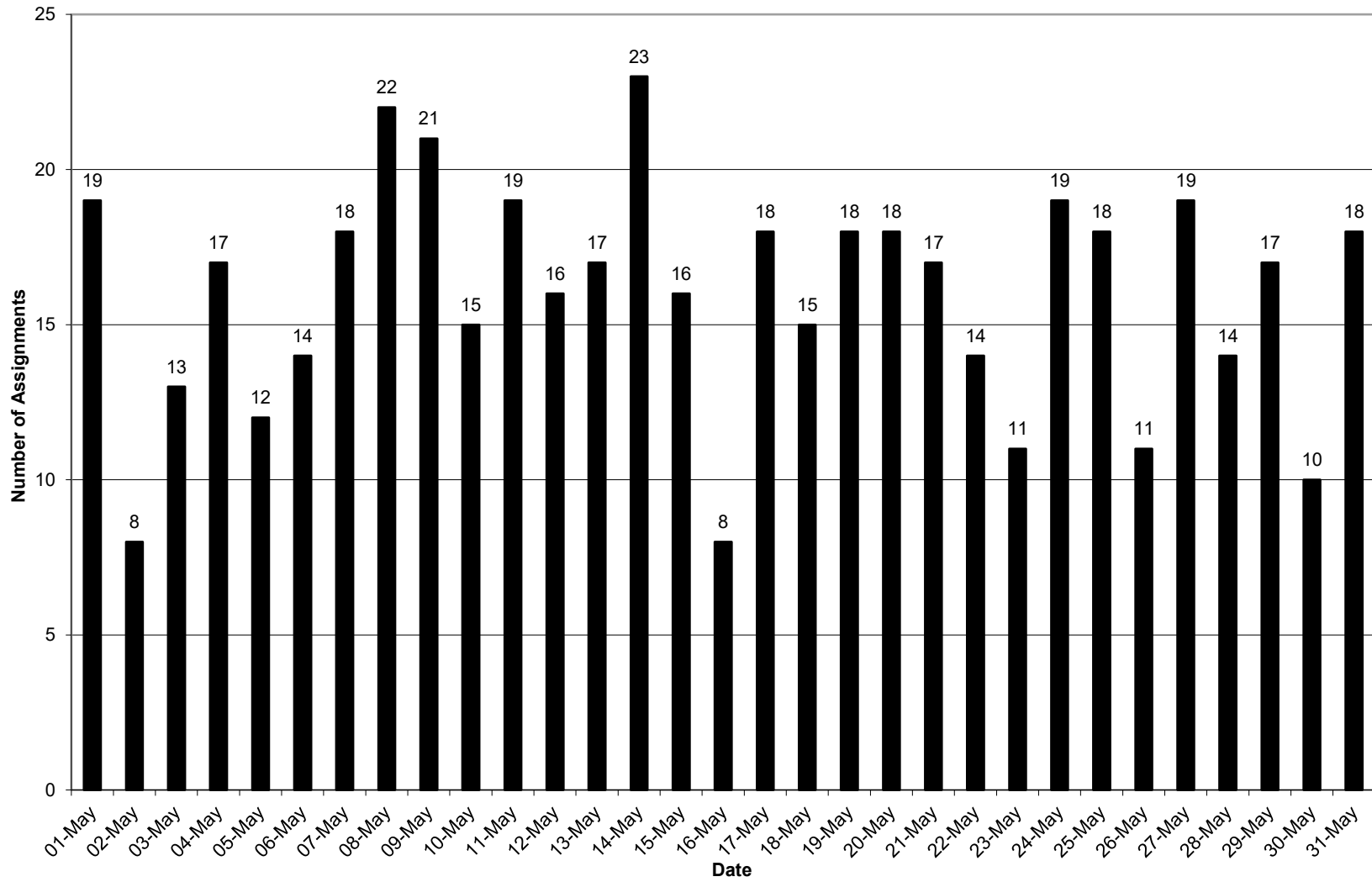
Section 237(d)(3)
Assignments Per Day
March 2020



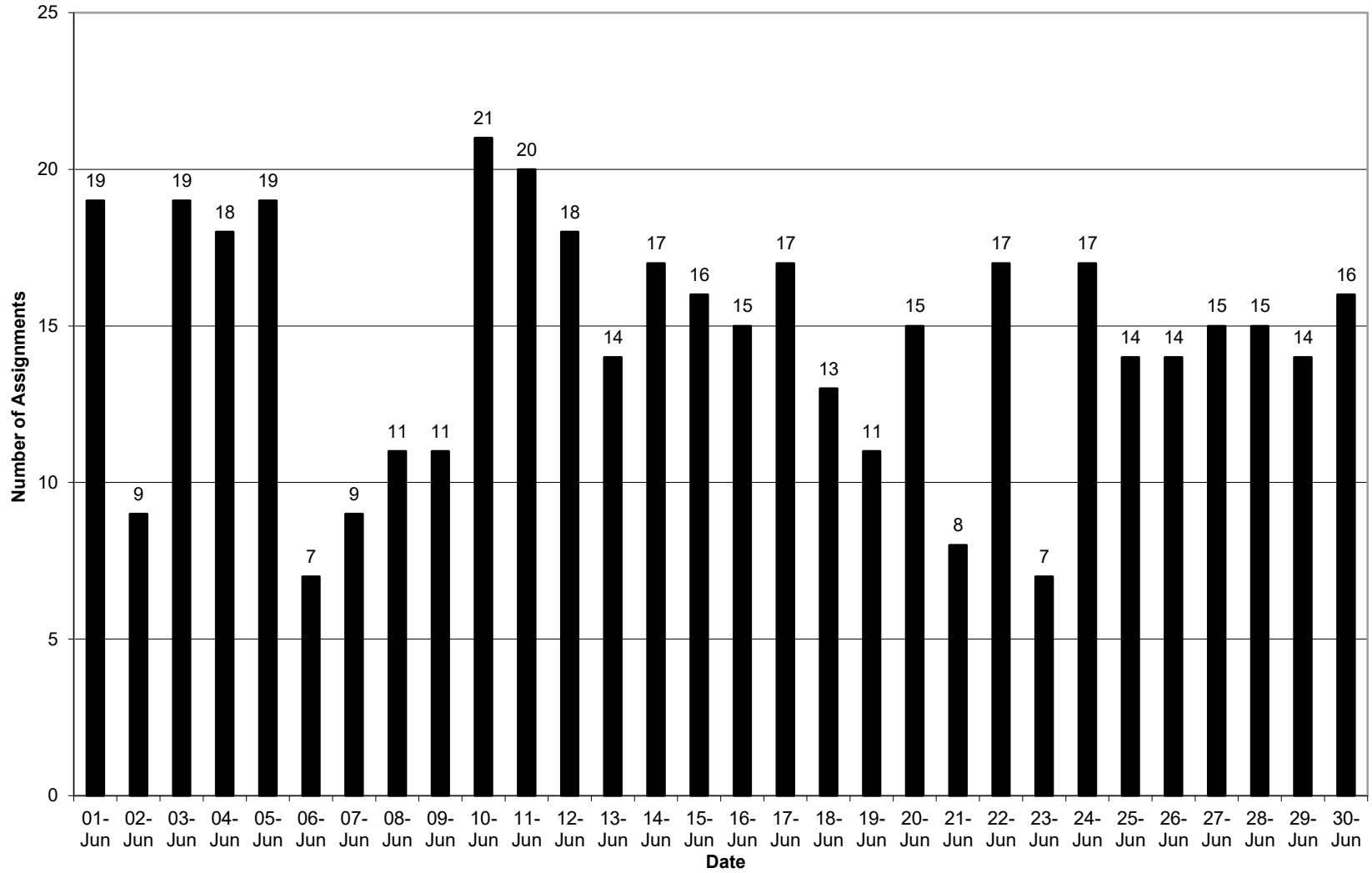
Section 237(d)(3)
Assignments Per Day
April 2020



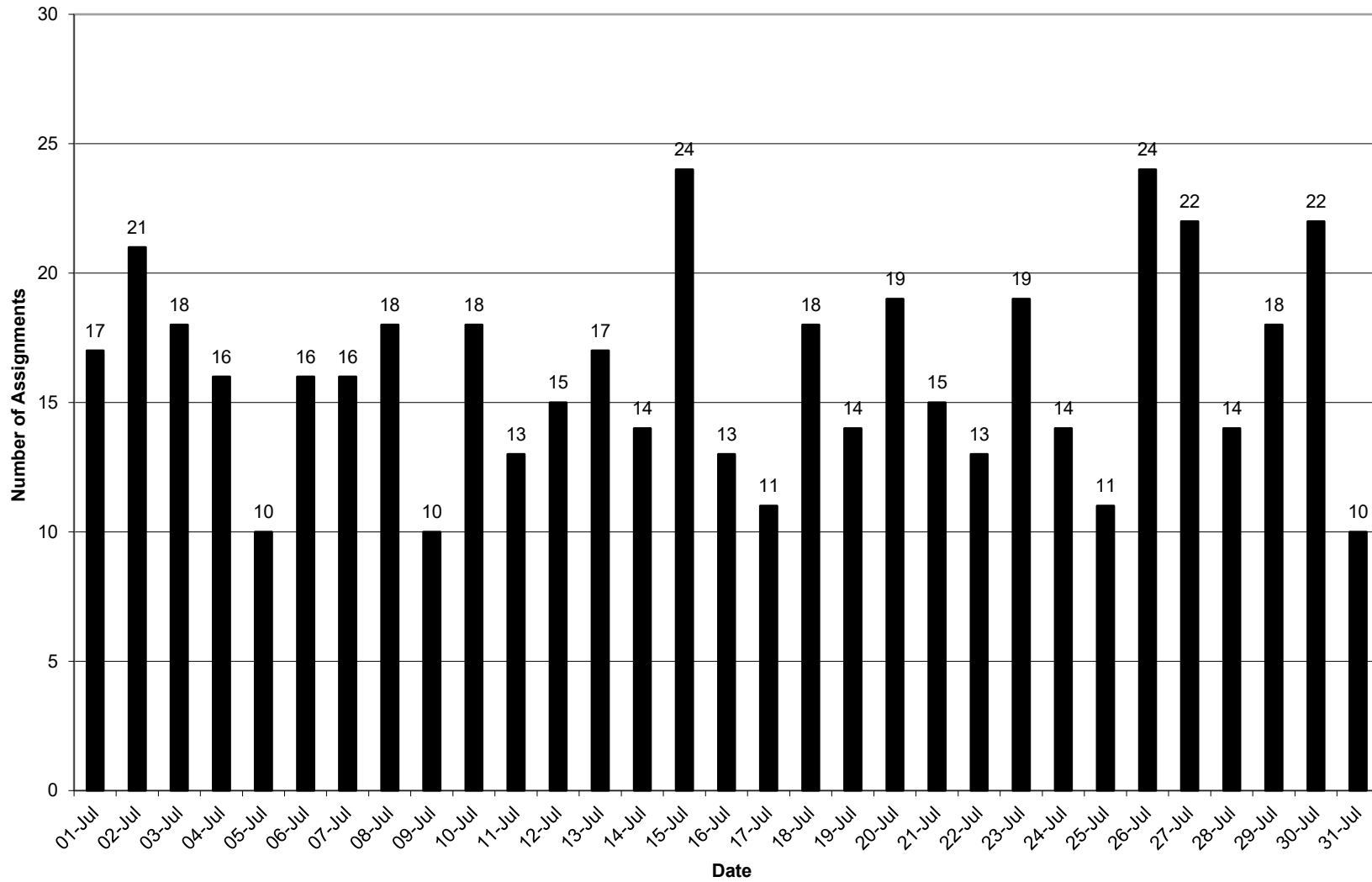
Section 237(d)(3)
Assignments Per Day
May 2020



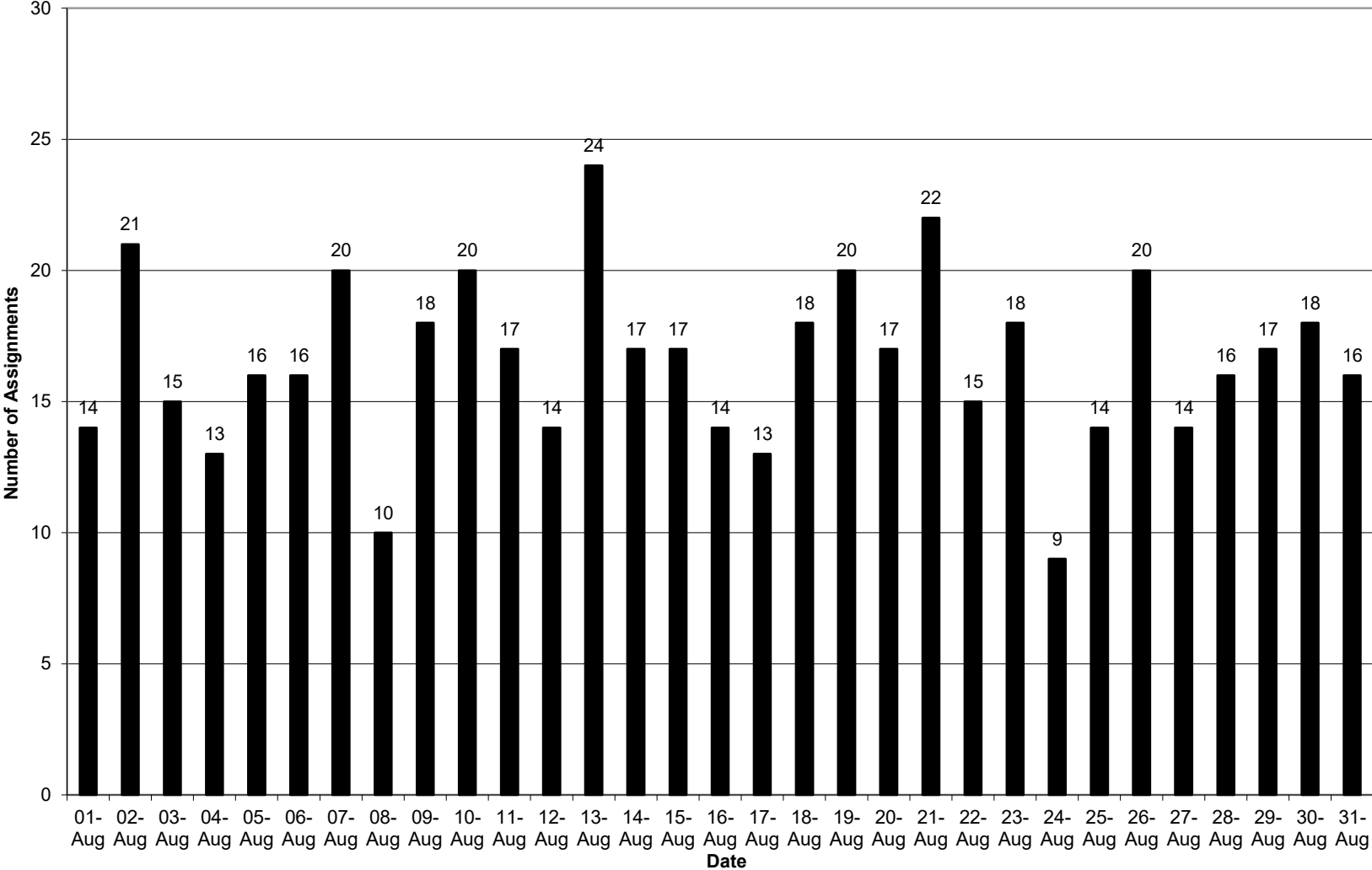
Section 237(d)(3)
Assignments Per Day
June 2020



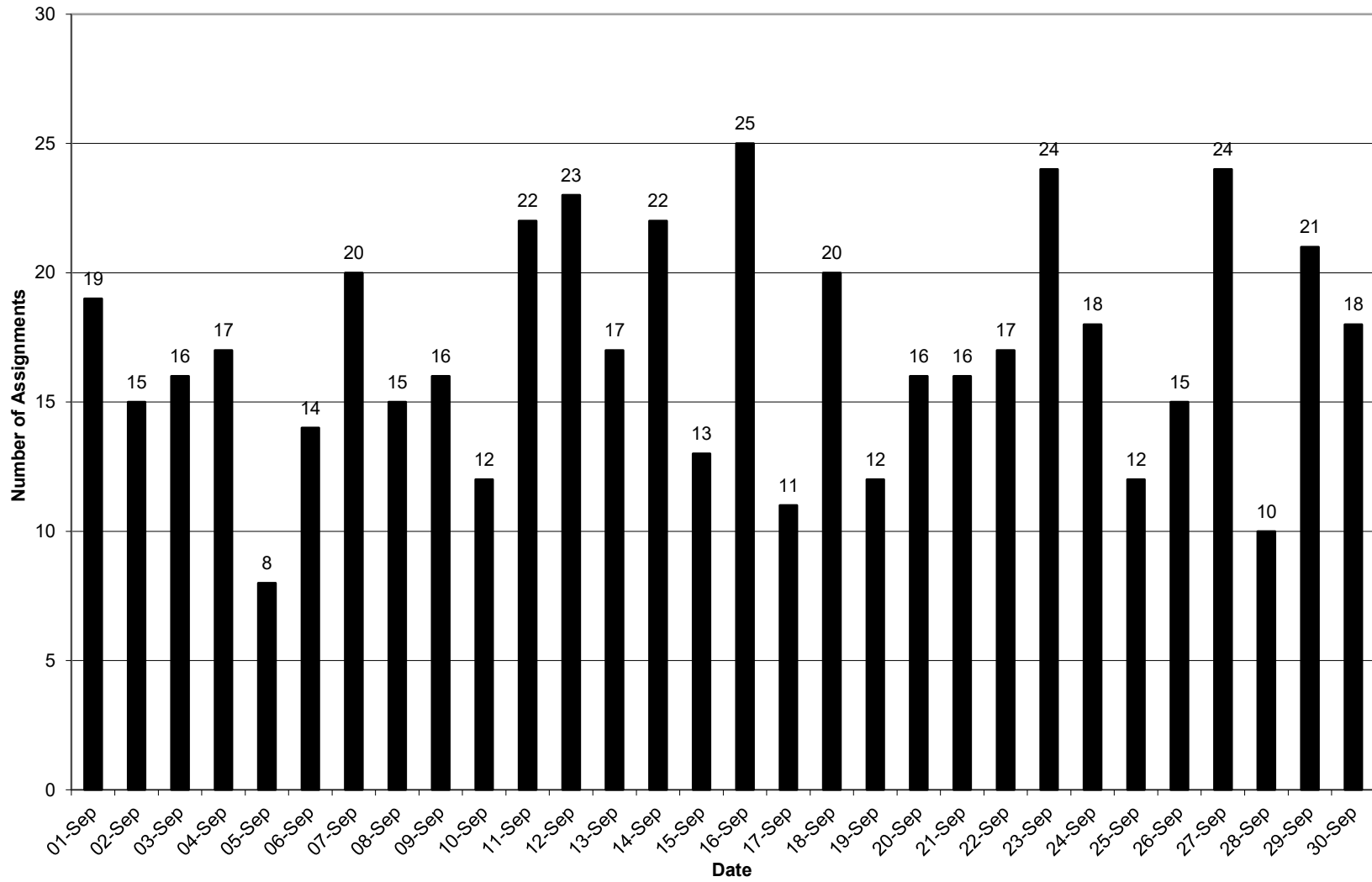
Section 237(d)(3)
Assignments Per Day
July 2020



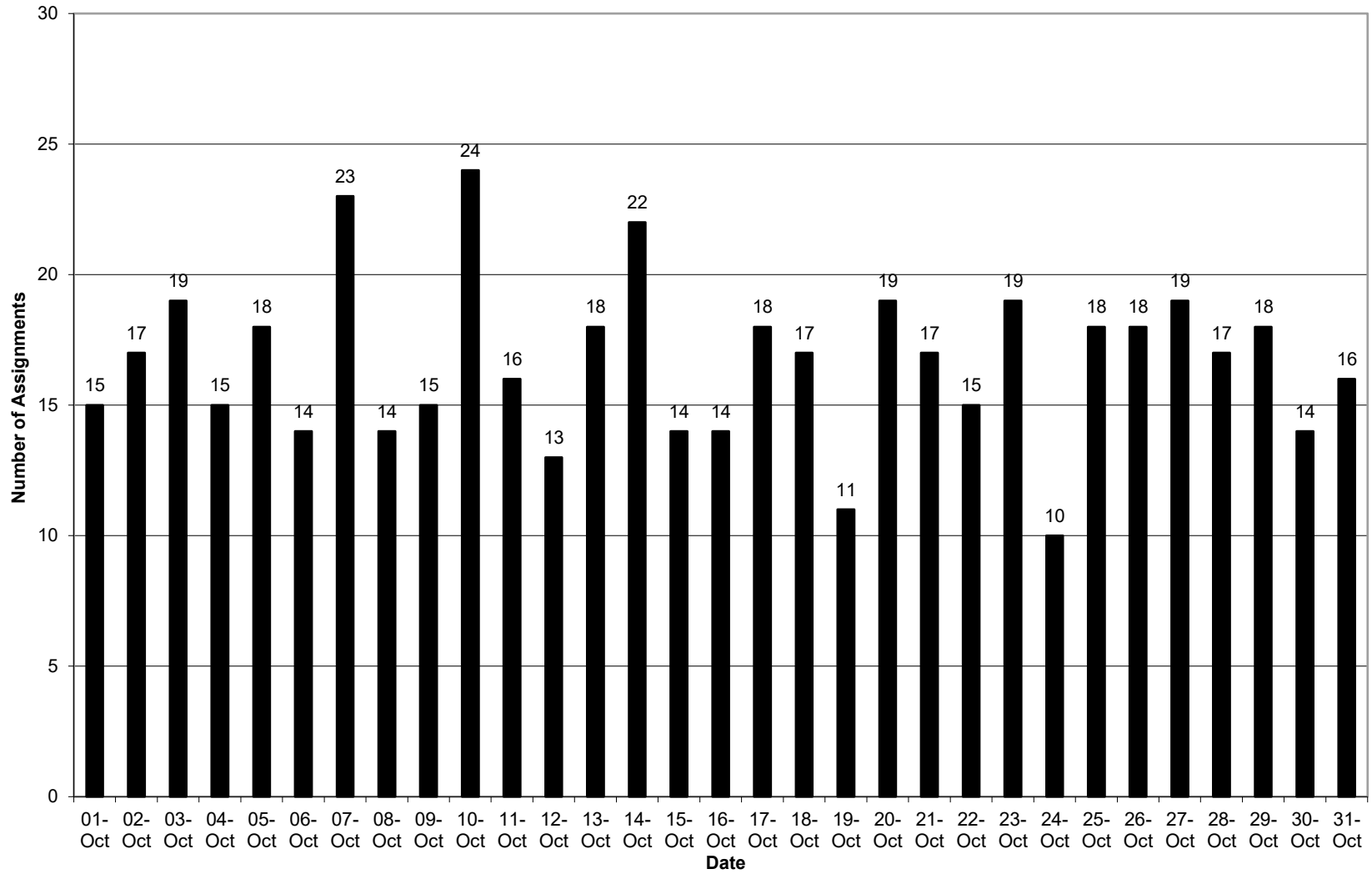
Section 237(d)(3)
Assignments Per Day
August 2020



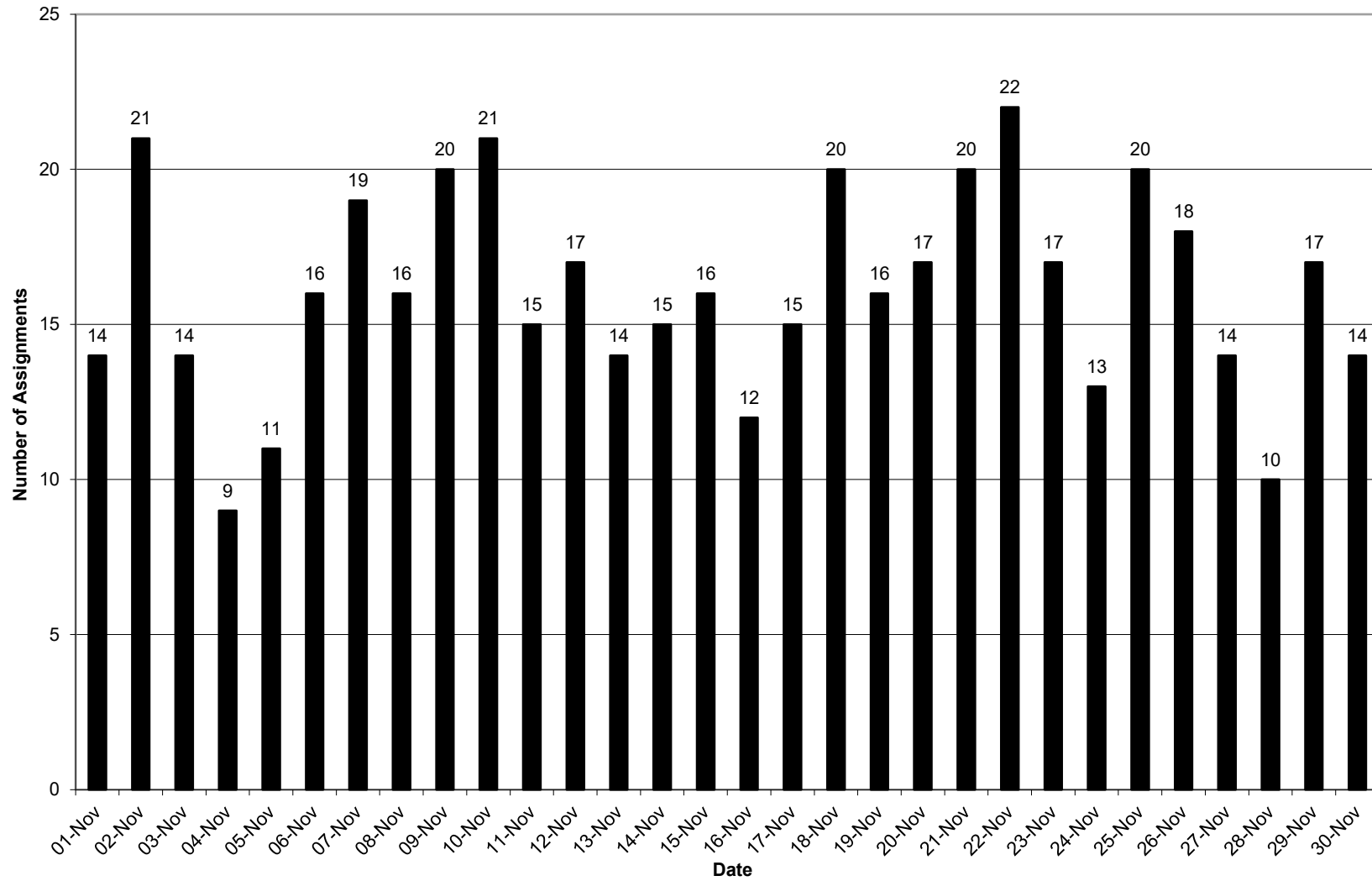
Section 237(d)(3)
Assignments Per Day
September 2020



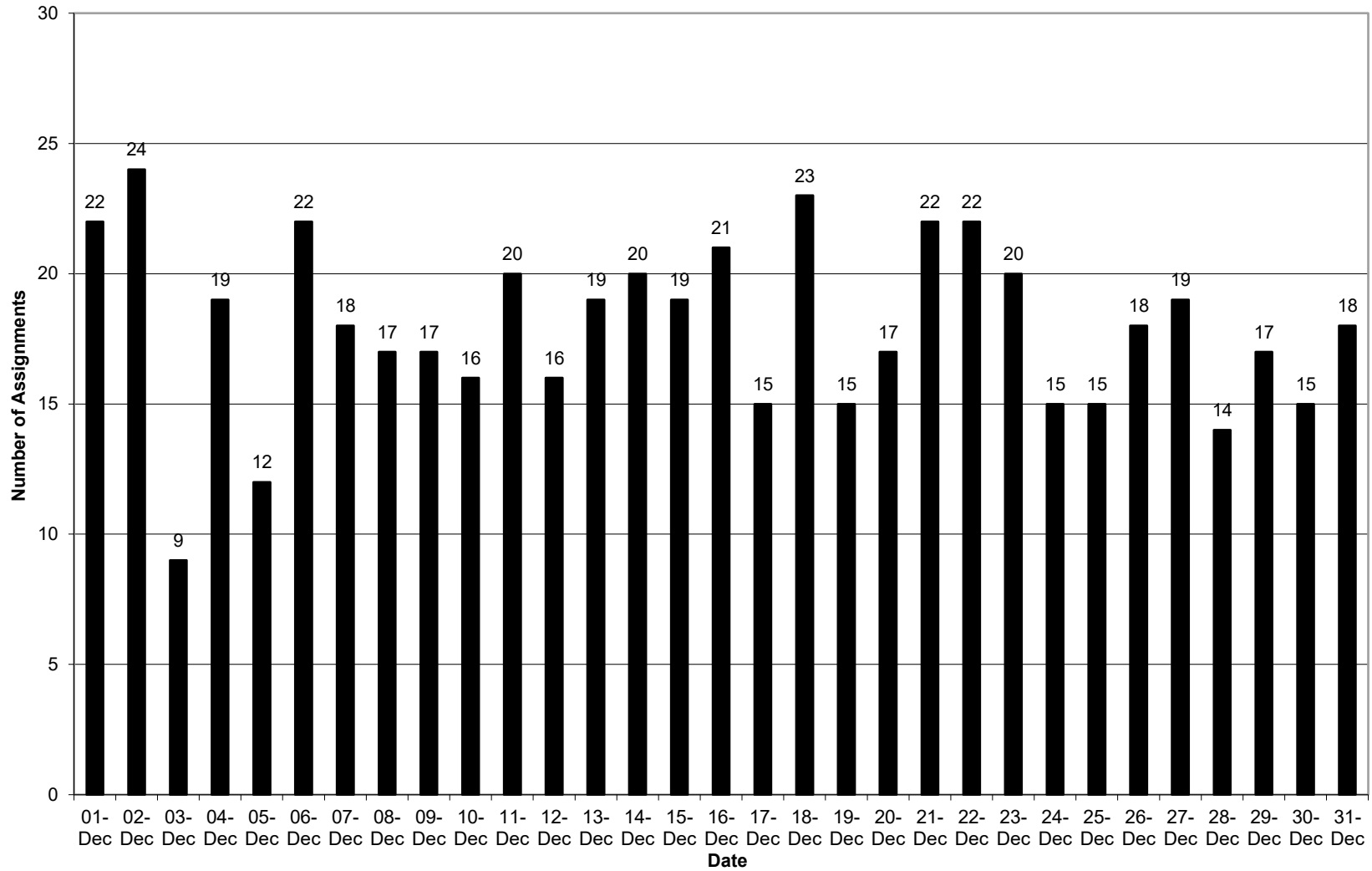
Section 237(d)(3)
Assignments Per Day
October 2020



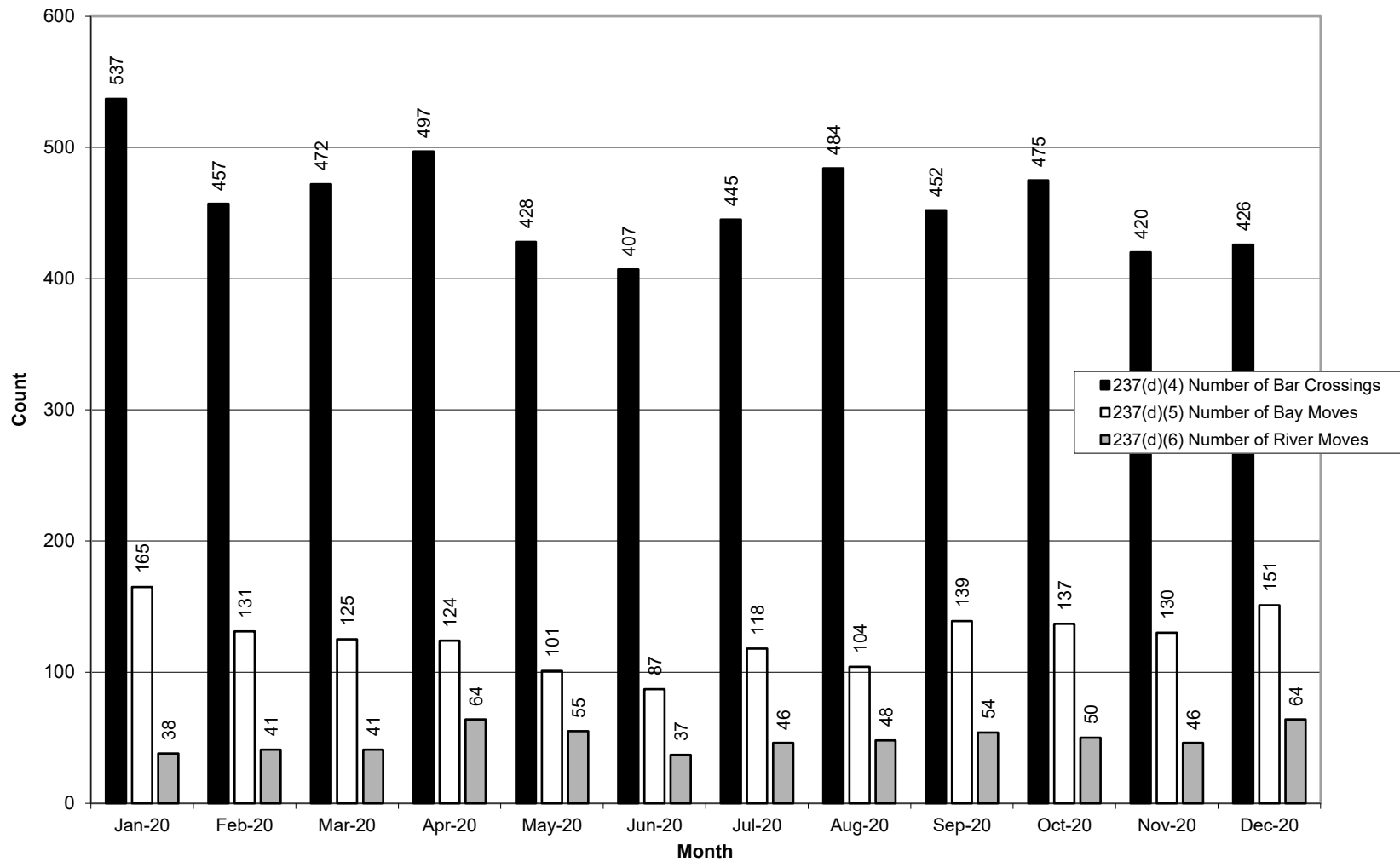
Section 237(d)(3)
Assignments Per Day
November 2020



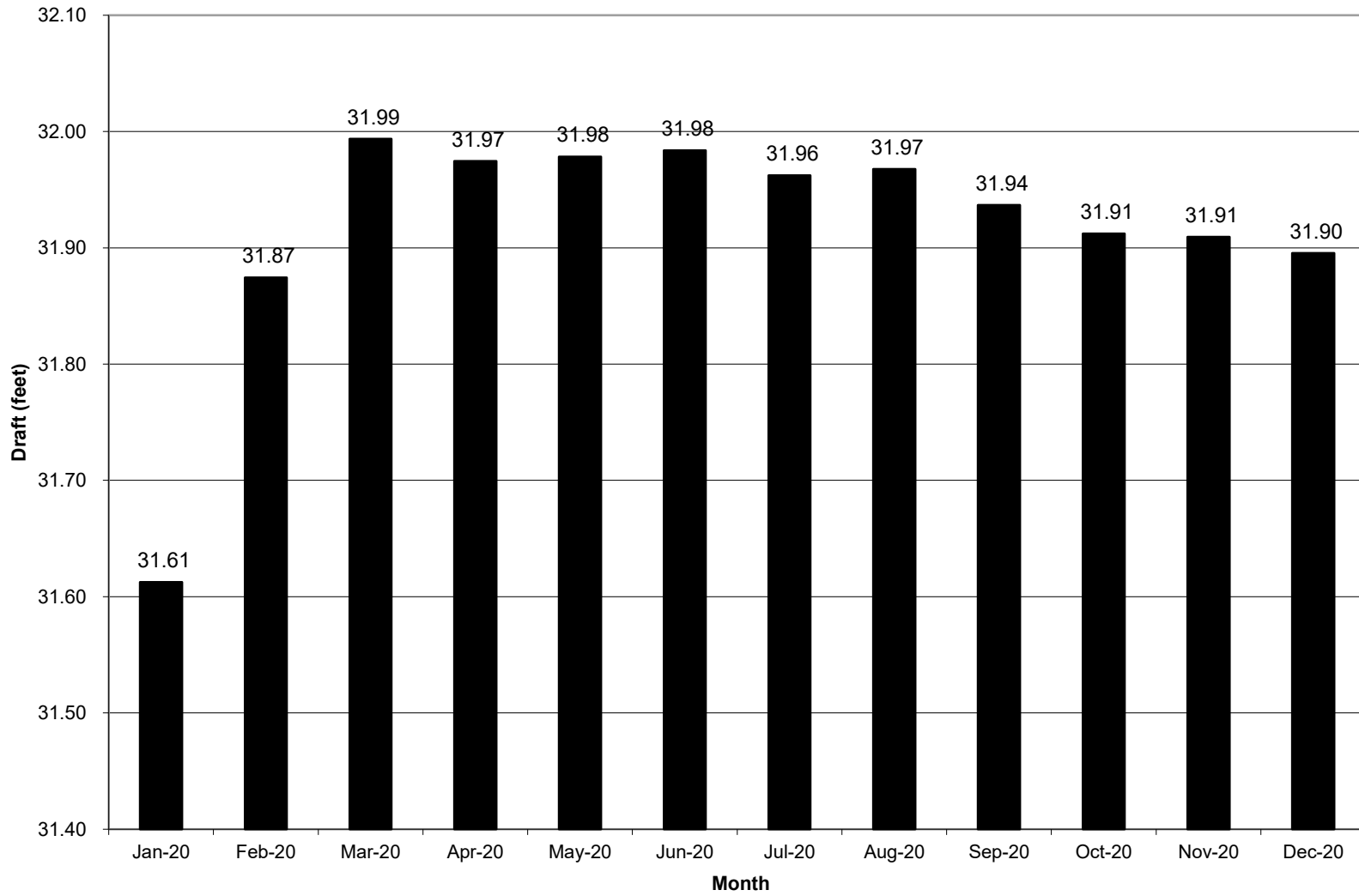
Section 237(d)(3)
Assignments Per Day
December 2020



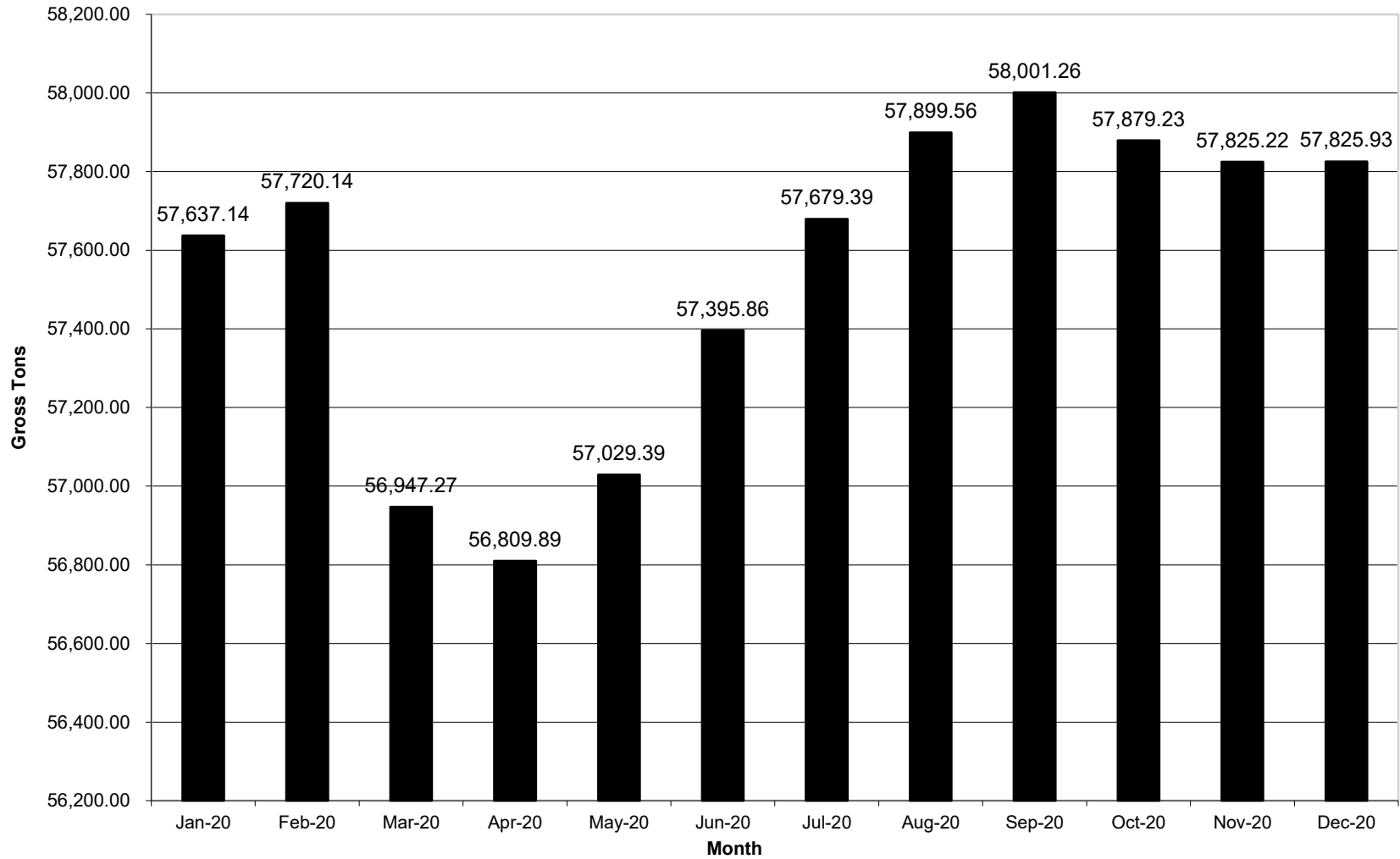
Section 237(d)(4, 5, 6)
Number of Bar Crossings, Bay Moves and River Moves
 January 1 to December 31, 2020



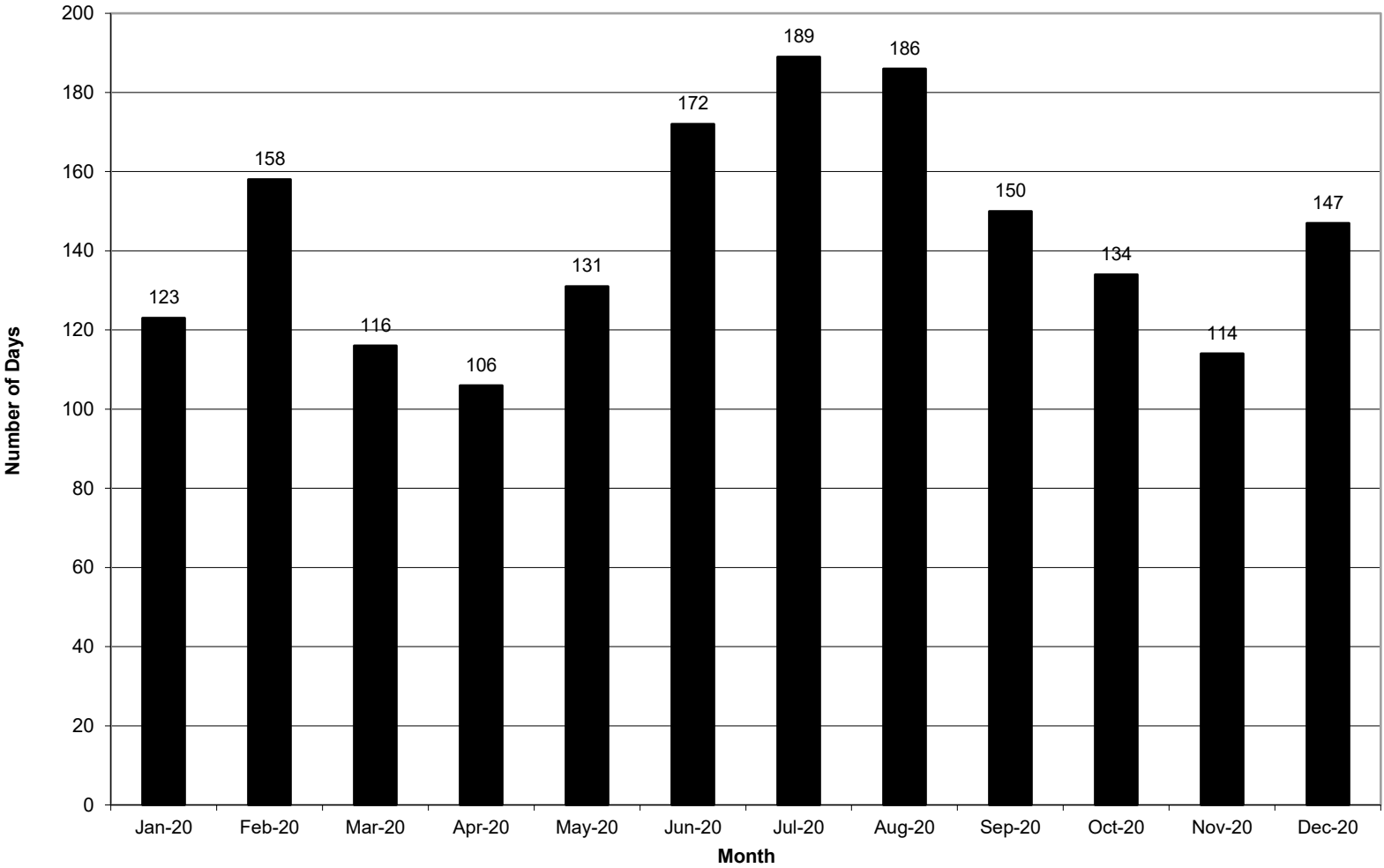
Section 237(d)(7)
Average Draft of Vessels
January 1 to December 31, 2020



Section 237(d)(8)
Average Gross Tonnage
January 1 to December 31, 2020



Section 237(d)(9)
Number of Pilot Days Pilots Reported Sick or Injured
January 1 to December 31, 2020



Section 237(d)(10)

January 1 to June 30, 2020

MRP Exceptions

Number of times a pilot resumed duties with less than 12 hours off duty

Date	Number of Pilots	Min. Rest (hours)	Assign. That Day	Roster		Number of Pulled Pilots
				Short (60 Auth.)	Total Pilots	
3-Jan	4	10.2	24	5	2	1 Comp, 1 Riding
9-Jan	5	9.1	21	5	6	1 Bus., 1 Comp, 2 NFFD, 1 PA Pull, 1 PA Vac
12-Jan	1	10.2	25	5	4	2 NFFD, 1 PA Pull, 1 PA Vac
15-Jan	1	10.7	22	5	5	1 Bus., 1 Comp, 2 NFFD, 1 PA Pull
26-Jan	4	9.0	27	5	4	2 NFFD, 1 PA Pull, 1 Riding
27-Jan	3	10.7	20	5	5	1 Bus., 2 NFFD, 1 PA Pull, 1 Riding
28-Jan	1	11.6	17	5	4	2 NFFD, 1 PA Pull, 1 Riding
14-Feb	1	8.3	20	5	4	1 Bus., 1 Comp, 2 NFFD
19-Feb	8	10.0	22	5	4	1 Comp, 2 NFFD, 1 Riding
25-Feb	1	11.8	13	5	5	1 Comp, 2 NFFD, 1 PA Pull, 1 Riding
9-Mar	1	11.2	16	5	4	2 NFFD, 2 PA Pull
22-Mar	1	8.7	19	5	4	3 NFFD, 1 PA Pull
24-Mar	1	10.7	21	5	4	3 NFFD, 1 PA Pull
25-Mar	1	11.9	19	5	4	3 NFFD, 1 PA Pull
1-Apr	1	11.2	23	4	4	1 Bus, 1 Comp, 1 NFFD, 1 PA Pull
4-Apr	3	11.4	19	4	6	2 Comp, 2 NFFD, 2 PA Pull
6-Apr	2	10.7	12	4	5	1 Comp, 2 NFFD, 2 PA Pull
16-Apr	1	11.4	17	4	5	3 NFFD, 1 PA Pull, 1 Riding
19-Apr	4	11.5	15	4	5	3 NFFD, 1 PA Pull, 1 Riding
30-Apr	4	10.3	29	4	3	2 NFFD, 1 PA Pull
1-May	1	10.5	19	4	3	2 NFFD, 1 PA Pull
9-May	2	11.0	21	4	3	1 Comp, 2 NFFD
14-May	1	11.5	23	4	4	3 NFFD, 1 PA Pull
20-May	2	11.0	18	4	6	1 Bus, 1 Comp, 3 NFFD, 1 PA Pull
15-Jun	2	11.3	16	4	7	1 Comp, 1 Illness, 4 NFFD, 1 PA Pull

Total 56

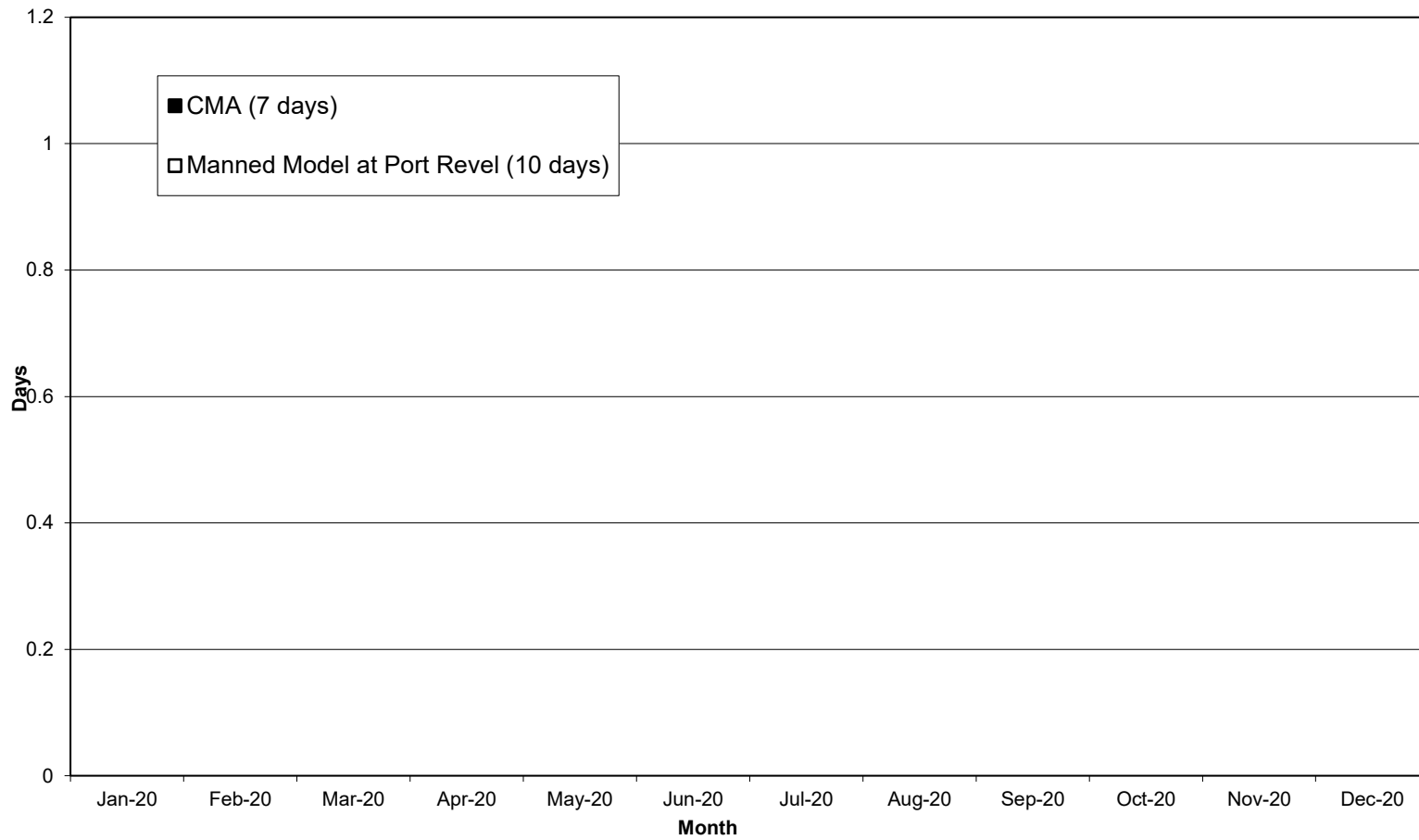
**July 1 to December 31, 2020
MRP Exceptions**

Date	Number of Pilots	Min. Rest (hours)	Assign. That Day	Roster		Number of Pulled Pilots
				Short (60 Auth.)	Total Pilots Pulled	
22-Jul	1	10.6	13	6	7	1 Bus., 1 Comp, 4 NFFD, 1 PA Pull
27-Jul	3	10.5	22	6	5	4 NFFD, 1 PA Pull
2-Aug	1	10.2	21	6	4	2 Comp, 2 NFFD
10-Aug	2	11.3	21	6	6	1 APA, 1 Comp, 3 NFFD, 1 PA Pull
11-Aug	1	10.5	17	6	6	1 APA, 1 Comp, 3 NFFD, 1 PA Pull
21-Aug	4	11.0	22	6	6	1 APA, 1 Comp, 2 NFFD, 1 PA Pull, 1 Pers.
26-Aug	1	11.7	20	6	6	1 APA, 2 Comp, 2 NFFD, 1 PA Pull
12-Sep	1	11.2	23	6	2	2 Comp
2-Oct	2	10.7	17	8	6	1 Bereave, 3 Bus., 2 NFFD
5-Oct	1	11.1	18	8	6	1 Bereave, 2 Bus., 1 Comp, 2 NFFD
10-Oct	7	10.0	24	8	1	1 Comp
14-Oct	1	10.9	21	8	4	3 Bus., 1 Comp
15-Oct	1	9.3	14	8	4	1 Jury, 3 NFFD
21-Oct	1	11.8	17	8	5	1 Bereave, 1 Comp, 3 NFFD
2-Nov	1	11.1	21	8	3	3 NFFD
16-Nov	1	11.0	12	8	5	1Comp, 3 NFFD, 1 Ride
22-Nov	1	10.1	22	8	1	1 NFFD
26-Nov	1	11.9	21	8	4	3 NFFD, 1 Ride
3-Dec	3	11.0	23	9	3	1 Comp, 1 NFFD, 1 Other
4-Dec	3	10.8.	21	9	3	1 Comp, 1 NFFD, 1 Other
6-Dec	4	8.3	25	9	5	1 Comp, 3 NFFD, 1 Other
8-Dec	4	11.2	21	9	4	1 Comp, 3 NFFD
15-Dec	3	10.1	22	9	4	1 Comp, 3 NFFD
24-Dec	1	10.8	16	9	2	2 NFFD
28-Dec	1	10.0	19	9	3	1 Comp, 2 NFFD

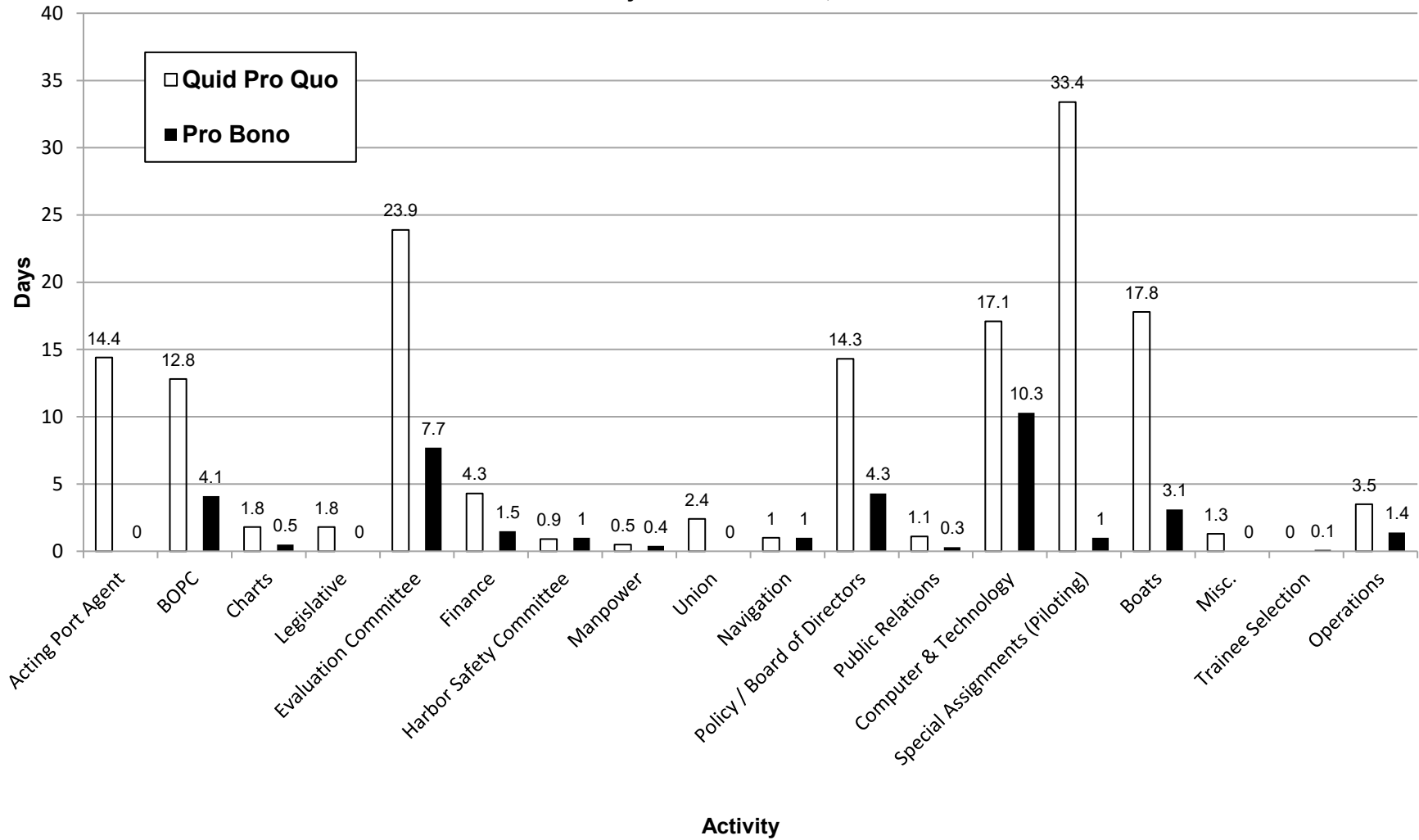
Total 50

2020 total 106

Section 237(d)(11)
Pilot Days Training
January 1 to December 31, 2020



**Section 237(d)(12)
 Number of Days (8 hours) Pilots Were Engaged In Administrative Duties
 January 1 to December 31, 2020**



Pilots pulled from the regular rotation for multi-day pilotage

Note: SFBP was not engaged in Monterey pilotage when Section 237(d) was written. Pilots assigned to Monterey jobs stay aboard for extended periods of time. The effect this has on the normal rotation of pilots is the same as if the pilot was "pulled" from the rotation, in effect, "shorting the board".

<i>No.</i>	<i>Pilot</i>	<i>Ship</i>	<i>From</i>	<i>To</i>	<i>Then To</i>	<i>Ride</i>	<i>BoB</i>	<i>LOJ hrs.</i>	<i>LOJ days</i>
1	LESIEUR	CRYSTAL SYMPHONY	SEA	MRY	SFO27	01/06/20 07:00	01/08/20 08:27	49.5	2.1
2	JOHNSON	AMADEA	SFO27	MRY	SEA	03/02/20 22:15	03/04/20 15:50	41.5	1.7