

# GILDA

## OBJECTIVE :

docking with tug and anchors in Avon

# GILDA

(ship's dimensions in meters)



The Gilda has variable  
Draught : 10.3 m to 12.3 m

The Gilda has an  
optional BECKER rudder

		<b>GILDA 125 000 Dwt</b>	
Length o.a		10,96	
		274	
Breadth		1,68	
		42,00	
Loaded draught		0,62	
		15,52	
Loaded displ.MT		9,55	
		149 000	
Ballast draught	F	0,30	
		7,37	
	A	0,46	
		11,59	
Ballast displ.MT		5,61	
		88 000	
Normal S.H.P.		0,308	
		24 000	
Angular rudder rate (Deg/sec)		17,5	
		3,5	
Bow thruster S.H.P.	Stern thruster S.H.P.	0,050	0,050
		1 500	1 500
Chain lenght		14	
		350	
Block coefficient		0,830	

# SAN FRANCISCO : AVON



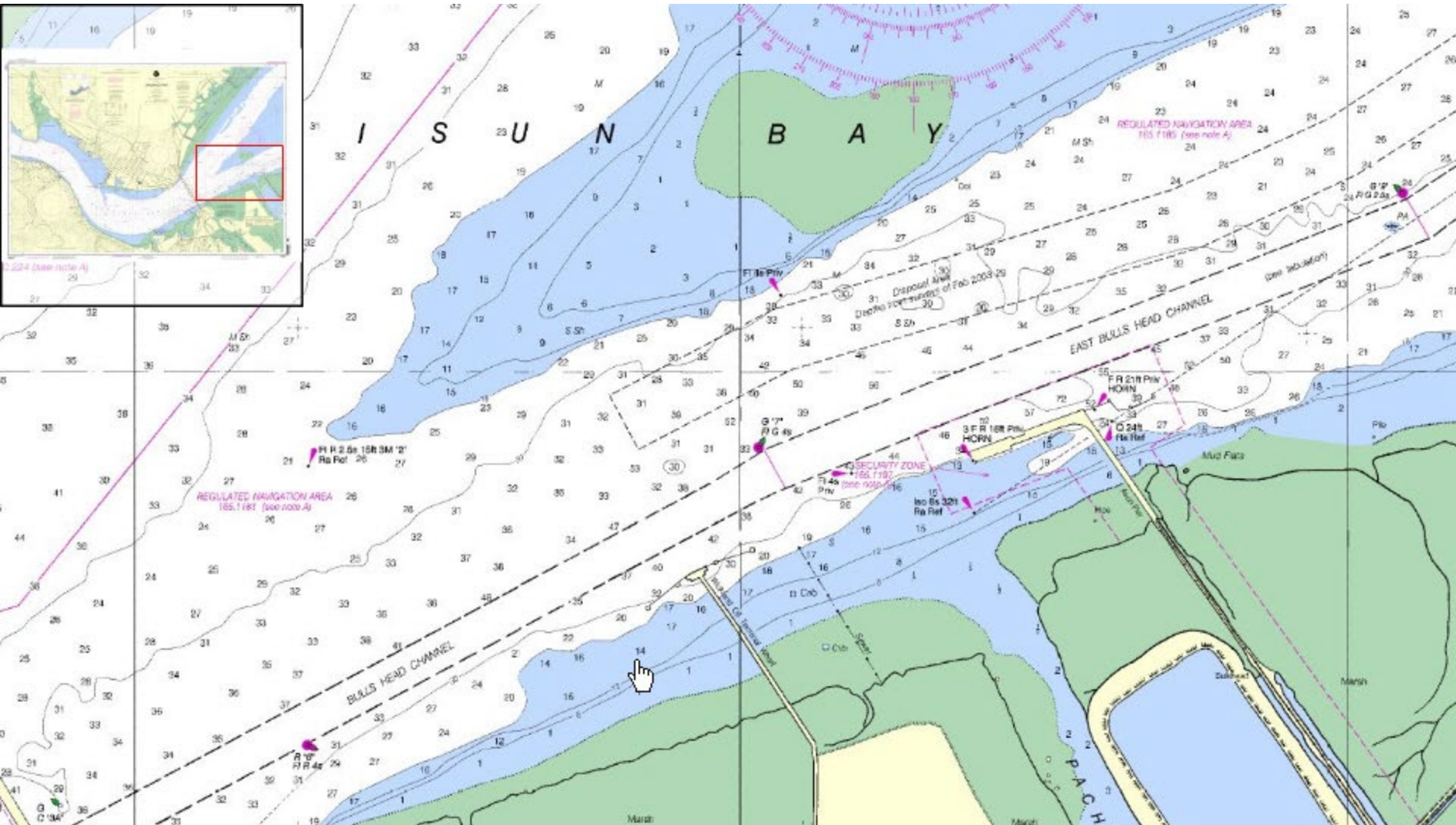
# SAN FRANCISCO : AVON



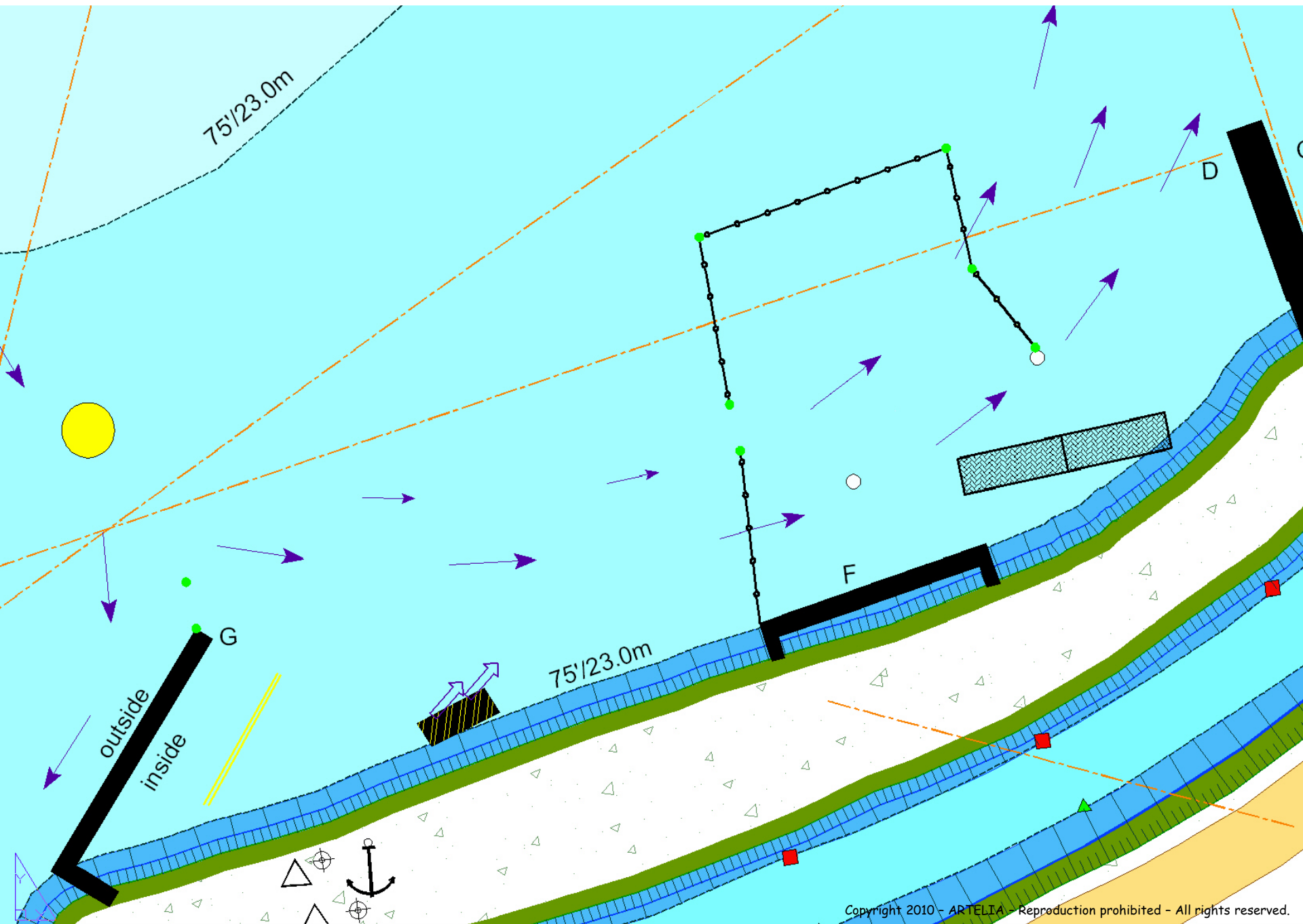
Avon

Benicia Valero

# SAN FRANCISCO - AVON

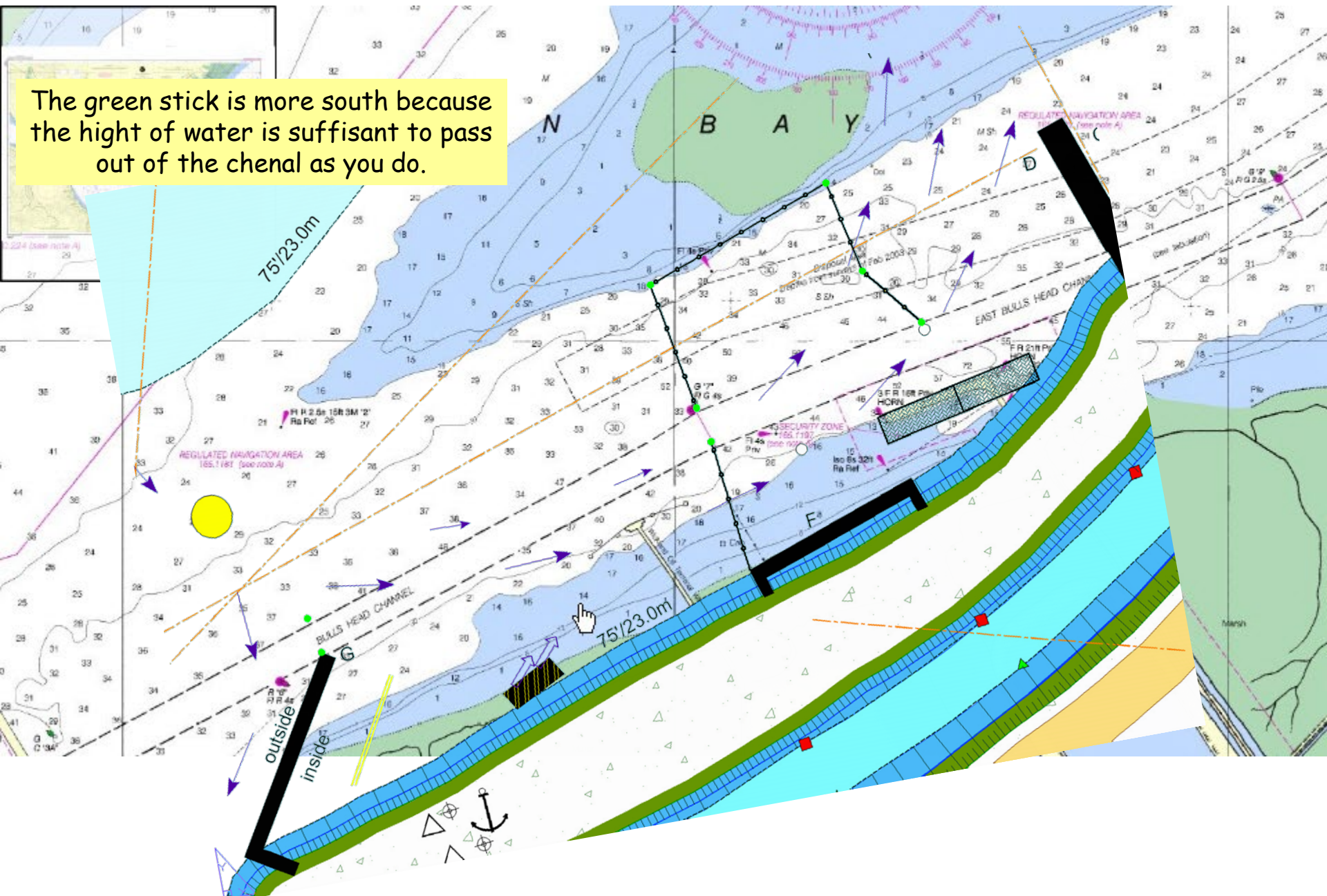


# PORT REVEL - AVON

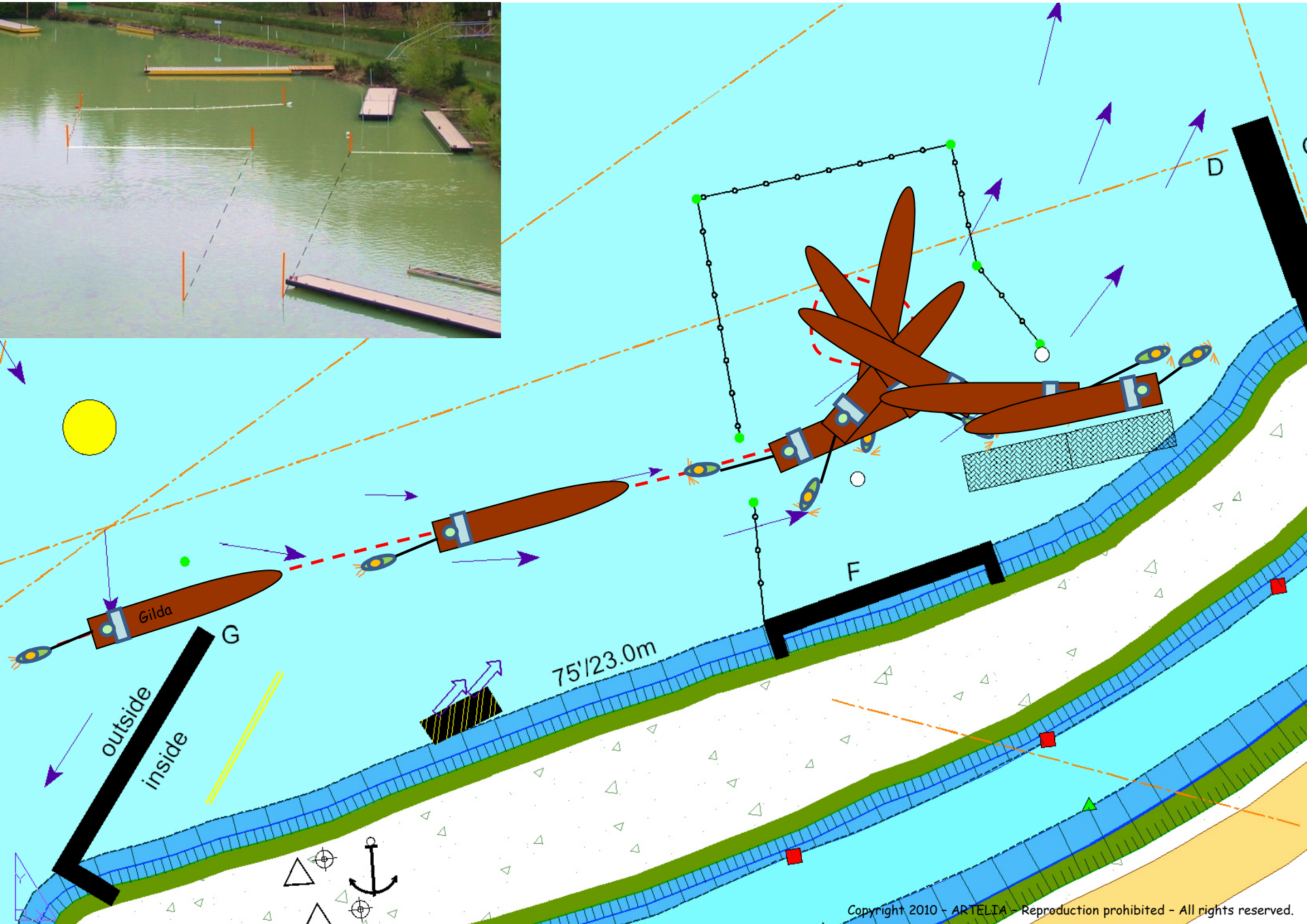


# SAN FRANCISCO - AVON

The green stick is more south because the height of water is sufficient to pass out of the channel as you do.



# AVON





# AVON : Push-pull

