

BOPC RECEIVED
8-23-2023

PILOT BOAT GOLDEN GATE
CONDITION & VALUATION



7 June 2023, GOLDEN GATE moored at builder Snow Boat, Seattle, Washington

Final Issue
19 August 2023

PILOT BOAT GOLDEN GATE CONDITION & VALUATION

SURVEY PARTICULARS

Survey Assigned By San Francisco Bar Pilots
Assigned on Date 11 April 2023
On Behalf Of Interested Vessel Owners
Survey Location Seattle, Washington
Charles Taylor Ref. AM028560

INTRODUCTION

This is to confirm that, acting at the behest of Mr. Jason Covell, San Francisco Bar Pilots, the undersigned surveyor did on 6 June 2023, and subsequent date, attend onboard the GOLDEN GATE moored at Snow Boat, Seattle, Washington for survey inspection in order to ascertain the condition, valuation and suitability for service.

VESSEL PARTICULARS

Name	GOLDEN GATE
Official Number	1334215
IMO or Other Number	SNW001081221
Year Completed	2023
Hailing Port	San Francisco, CA
Hull Material	Aluminum
Mechanical Propulsion	Yes
Gross Tonnage	86GRT
Net Tonnage	69NRT
Length	70.3ft
breadth	19.1ft
Depth	9.6
Place Built	Seattle, WA
Builder	Snow & Company, Inc.
Operational Endorsements	Coastwise

Owner	San Francisco Bar Pilots Benevolent and Protective Association Pier 9 East End San Francisco, CA 94111
Restrictions	None

INTENDED SERVICE

Delivery and retrieval of San Francisco Bar Pilots serving commercial ships at San Francisco Bay, California.

GENERAL DESCRIPTION

The GOLDEN GATE is a purpose designed and built new vessel constructed of welded flush plate aluminum. The hull is configured as a single hard chine v-bottom, with a raked stem transitioning to a vertical bow, hullsides and transom. The main deck is flush at the sheer with foredeck, port and starboard side decks and aft deck surrounding a raised deckhouse. The deckhouse combines the vessel command station and Pilot passengers seating within the space. The lower deck is arranged with four watertight compartments with bosun's locker forepeak, accommodations space, engine room and jet room aft. Propulsion consists of twin diesel main engines and waterjets.

SHIP'S DOCUMENT

DOCUMENT	AGENCY	NOTES
Certificate of Documentation	USCG	3/2024 expiry

SAFETY EQUIPMENT

QTY	ITEM	NOTES
14	Life jackets	Mustang, Solas Type I, new
2	Life rings	Lifesaving Systems, 24"D, new
2	Floating light	Lifesaving Systems, new
2	Rescue throwline	Lifesaving Systems, 75'L, new
1	Rescue basket	Shipyards, hydraulic actuation, new
2	Life raft	Survivitec, 8 person, Solas/TO, 12/2024 expiry
2	Life raft HRU	Hammar, 12/2024 expiry
1	EPIRB	ACR, GlobalFix V4, new
2	Boat hook	***, new

FIRE FIGHTING EQUIPMENT

Qty	Item	Notes
2	Engine room aerosol fire suppression generator	Pyrogen, Afp-1781, ABCE, , 4/2024 expiry
1	Weather deck hydrant	Shipyard
2	Portable extinguisher	Amerex, dry chem, ABC, 4/2024 expiry
1	Portable extinguisher	Amerex, Co2, 5lb BC, 4/2024 expiry
1	Portable extinguisher	Amerex, Co2, 10lb BC, 4/2024 expiry
2	Portable extinguisher	Amerex, Co2, 20lb BC, 4/2024 expiry
2	Fire alarm pull stations	Shipyard
1	Fuel system shut off pull station	Shipyard

DECKHOUSE, COMMAND STATION

The deckhouse is arranged with the command station forward on centerline with two (2) pilot chairs and watertight hatch access to the lower deck located on starboard. Fixed windows provide 360 degree visibility laterally and overhead. The forward console is orderly arranged with vessel control, navigation, communication and data systems components. Aft, double rows of marine seats are arranged for ten (10) Bar Pilot passengers. All seating positions are provided with table tops and ac/dc power. Finishes include plastic laminate verticals and horizontal tops, hard panel overhead and vinyl floor cover. Overhead lighting and stereo speakers are flush mounted. The space is provided with HVAC service and protected by audio and visual distress signals, watertight door and hatch sensors, Co2, smoke and heat alarms, and portable fire extinguishers.

DECKHOUSE, COMMAND STATION EQUIPMENT

Qty	Item	Notes
1	Joy stick steering control	Hamilton Jet
1	System controller	Hamilton Jet, Mouse Boat
2	Port, starboard controllers	Hamilton Jet
1	Dual jet/steering controllers	Hamilton Jet
1	Dual main engine throttle control	Hamilton Jet
1	Jet system multi-function display	Hamilton Jet
2	Main engine monitor displays	MAN
1	Main engines start/stop panel	MAN
2	Main engines emergency stop panels	MAN
1	Trim interceptors control panel	Humphree
4	Multi-function display screens	Böning
1	Display operation control panel	Böning, AHD-DC
2	Display operation control panels	Böning, AHD-DRM T
1	Fuel tank levels display	*** software, display choice across Böning screens

1	DC battery systems monitoring	*** software, display choice across Böning screens
1	Integrated plotting systems	Furuno, NAVpilot 700
1	Autopilot control multi display	Furuno, 711C
2	Radar control units	Furuno, RCU-015
2	Radar processors	RPU-0254
1	Overhead multi-display panel	Böning
1	Radio direction finder	Rhotheta, RT-500-M
1	Emergency man overboard button	Shipyards
1	Horn system control	Kahlenberg
1	Whistle button	Shipyards
1	Searchlight controller	Luminell, Light Matters
1	Magnetic compass	Ritchie, Powerdamp Plus
1	VHF, loudhailer switch panel	Shipyards
1	Loudhailer	Furuno
3	VHF radiotelephone	Furuno, FM-8900S
1	VHF radio	Icom, IC-M73 handheld
1	Navigation/signal light control panel	Böning, AHD-DPS02 BS
1	Emergency battery	Lifeline
1	Electrical systems circuit breaker panel	Shipyards, 12/24vdc, 120/208vac, 120vac inverter
1	Data processing systems	Shipyards installations
1	Fire pump switch control panel	Shipyards
5	Window defrosters	Saint-Gobain, vetrotech
2	HVAC thermostat controllers	Technicold
2	Ventilation fan speed controls	Vimar
1	Windshield wiper control panel	Exalto, 5 wipers
1	Exterior/interior light switch panel	Shipyards
1	Entertainment stereo	Fusion, MS-RA70NSX
7	Overhead speakers	***
2	Piloting chairs	Eknes,Transit, Norway, centerline with track shifting
10	Passenger chairs	Eknes,Transit, Norway
1	Countertop cabinet	Shipyards
1	Refrigerator	NovaKool, undercounter

WEATHER MAIN DECK

The main deck is flush at the sheer with foredeck, port and starboard side decks and aft deck surrounding a raised deckhouse with port and starboard transom stairs leading to a cantilever swimstep Aft, ventilation plenum boxes, port and starboard, and an aft station pedestal, centerline, rise to add further solid wall blocking. Flush aluminum watertight hatches provide secondary escape and deck access from each hull compartment. Fuel and freshwater fills and vents are arranged as needed, as well as wastewater discharge port. The deck is protected by strategic placement of welded tube handrails to facilitate Bar Pilot movement. Finishes include gloss and nonskid paint coat and Bar Pilot strategic neoprene traction deck mat.

WEATHER MAIN DECK EQUIPMENT

Qty	Item	Notes
1	Spotlight/infrared camera	Luminell, SL21R
2	Loudspeaker	NewMar
4	Forward deck floodlight	Luminell, RLX Series, M860
8	Forward, side, and aft camera	***
1	Horn	Kahlenberg, S-330
1	Radar antenna	Furuno, RSB-128-123
1	Radar antenna	Furuno, R000-2510-0241
4	Radio antenna	Various
1	Anemometer	Young, 91500 ResponseONE
1	Navigation light set	DHR
5	Windshield wipers	Exalto
1	Pilot harness line track set	Hadrian.pilot, roller bearing
6	Mooring bollard	Shipyards, 7"D x 12"H, cruciform type
1	Anchor	Fortress, FX-85
1	Sheer guard set	***, 10"W x 18"H, neoprene
6	Aircraft tire fenders	***
1	Aft control station	Shipyards pedestal with: <ul style="list-style-type: none"> ▪ Joy stick steering control, Hamilton Jet ▪ Port, starboard controllers, Hamilton Jet ▪ Dual jet/steering controllers, Hamilton Jet ▪ Jet system multi-function display, Hamilton Jet ▪ Jet system multi-function display, Hamilton Jet ▪ Main engine monitor display, MAN ▪ Main engines start/stop panel, MAN ▪ Main engines emergency stop panels, MAN ▪ Rescue basket control
1	Rescue basket	Shipyards, hydraulic actuation

LOWER DECK FOREPEAK

Serving as a storage area, the lower deck forepeak lies aft of the chain locker and is a watertight compartment with sole access from the accommodations in the next compartment aft. The space contains the vessel's wastewater treatment plane (see Machinery & Electrical Equipment.) The space finish is bare aluminum with a diamond tread floor plate. Lighting provided by overhead fixtures. The compartment is protected by audio and visual distress signals, watertight door and hatch sensors, Co2, smoke and heat alarms, and portable fire extinguishers.

LOWER DECK ACCOMMODATION

The lower deck accommodation are arranged as a single compartment and include two stacked bunks, bench settee with table, galley service counter and enclosed head. Access is provided via a dogged hatch from the deckhouse above and aft bulkhead watertight door to the engine room aft. A forward bulkhead watertight hatch accesses the utility storage forepeak. Ship's main electrical distribution panels are arranged at the aft bulkhead. Finishes include plastic laminate verticals and horizontal tops, hard panel overhead and vinyl floor cover. Overhead lighting and stereo speakers are flush mounted. The space is provided with HVAC service. The compartment is protected by audio and visual distress signals, watertight door and hatch sensors, Co2, smoke and heat alarms, and portable fire extinguishers.

LOWER DECK ACCOMMODATIONS EQUIPMENT

Qty	Item	Notes
1	Speaker	Furuno
1	Galley sink and pressure fixture	***, stainless steel
1	Microwave	Sharp, commercial countertop
1	Coffeemaker	Keurig
1	Refrigerator	Nova Kool, undercounter
1	Head sink and pressure fixture	***, stainless steel
1	Toilet	Headhunter, Royal Flush

LOWER DECK, MECHANICAL & ELECTRICAL

Mechanical and electrical component systems are distributed throughout the vessel, with primary concentrations in the engine room (frame 13 – 4) and jet room (frames 4 – 0.) include propulsion, electrical generation, shorepower electric supply, hydraulic power, ac and dc electrical power, fuel oil, lubrication oil and seawater, wastewater and freshwater plumbing systems. The finish is bare aluminum with a diamond tread floor plate. Lighting provided by overhead fixtures. The compartment is protected by audio and visual distress signals, watertight doors and hatch sensors, Co2, smoke and heat alarms, fixed location automatic and portable fire extinguishers.

AC ELECTRICAL SYSTEM

120/208vac, 100A service delivery from twin auxiliary generators and shore power. Wiring appears as plastic sheath covered, multi-strand, copper marine type wiring noted as properly routed. Fixtures are marine type exterior and interior fixtures, with marine type switches. Protection include circuit breakers at distribution switch panels.

DC ELECTRICAL SYSTEM

24/12vdc service delivery from storage battery banks replenished via engine alternators and AC charger supply. Wiring appears as plastic sheath covered, multi-strand, copper marine type wiring noted as properly routed and supported throughout. Fixtures are marine type exterior and interior fixtures, with marine type switches. Protection include circuit breakers at distribution switch panels arranged throughout the vessel.

STRAY CURRENT PROTECTION

Stray current protection is arranged with an active monitor system.

TWIN MAIN ENGINES

Manufacturer	MAN
Model	D2862LE438
Rating	1,200hp @ 2,100rpm (2,400hp total)
Port Serial Number	710 6318 820 6320
Starboard Serial Number	710 6329 812 6320
Port Hours	0, seatrial only
Starboard Hours	0, seatrial only
Starting	24vdc
Cooling	Closed loop coolant with heat exchanger
Exhaust	Raw water cooled inline

TWIN TRANSMISSIONS

Manufacturer	Twin Disc
Model	MGX-6599SC
Port Serial Number	9A4346
Starboard Serial Number	9A4345
Ratio	1.87

TWIN WATERJET DRIVES

Manufacturer	Hamilton Jet
Model	HTX 52

Port Serial Number	136
Starboard Serial Number	137

TWIN AUXILIARY GENERATORS

Manufacturer	Northern Lights
Model	M944T3F
Output	38kw
Port Serial Number	9442-60071
Starboard Serial Number	9442-60072
Port Hours	0, seatrial only
Starboard Hours	0, seatrial only
Starting	12vdc
Cooling	Coolant loop / seawater exchanger
Exhaust	Wet, inline

MECHANICAL & ELECTRICAL EQUIPMENT

QTY	ITEM	NOTES
2	Main engines control module	MAN
2	Main engine fuel filter/water separator, first stage	Parker, 751000MAX
2	Main engine fuel filters, second stage	MAN, F820086
2	Seawater strainers	Groco
2	Seawater strainers	Groco, ARC-2000
2	Main engine exhaust system	Marine Exhaust Systems
2	Auxiliary generator exhaust system	Shipyard, waterlift
1	Engine room ventilation system	Delta T
2	Fan starter drives	Yaskawa V1000
1	Fire pump control panel	Superior Marine Service
2	Ventilation intake damper junction J-box	Shipyard
2	Ventilation exhaust damper junction J-box	Shipyard
2	Waterjet PCU circuit breaker panel	
2	Waterjet propulsion control unit	Hamilton Jet
1	Waterjet VDRIU data box	Hamilton Jet
2	Waterjet NTU data box	Hamilton Jet
2	Waterjet hydraulic power system	Spenser Fluid Power
2	Trim interrupter system	Humphree, Configuration 023753
1	Trim interrupter system data junction box	Shipyard
2	Hydraulic fluid reservoir	Shipyard, welded stainless steel
1	Hydraulic fluid filter	Stauff, SE-014-G-03-B/4

Pilot Boat GOLDEN GATECondition & Valuation
CTMTS Ref: AM028560

Page 10 of 19

2	Rescue basket HPU control panel	Shipyard, #1&2
1	Air compressor	***
1	Lube oil change system	Groco, U-Lube
1	Fire pump	***, 208vac
5	Bilge pump, float switch	Rule, 24vdc
1	Freshwater pressure system	Shipyard, Headhunter Mach 5 pump
1	Freshwater pressure vessel	Headhunter, Puffer
1	Hotwater heater	Raritan, 1700 Series
1	Wastewater treatment system	Redfox, Fox Pac, RF-50-V-FP-FG
1	HVAC system	Northern Lights, Technicold
1	Jet room electric heater	***, wall mount
8	Main start battery, 4 each	Lifeline
1	Main engine battery charger	Victron Energy, Skylla-IP65
1	Auxiliary generator battery charger	Victron Energy, Skylla-IP65
8	House bank battery, 4 each banks 1 & 2	Lifeline
4	Battery selector switch	Blu Sea Systems
2	Auxiliary generator start battery	Lifeline
2	Auxiliary generator battery switch	Blue Sea Systems
1	Inverter source selector switch	Shipyard
2	Inverter	Victron, Quattro, 24vdc,5000va, 120amp
2	Battery selector switch	Blu Sea Systems
2	Inverter fuse	***, 300A
1	Shorepower transformer	HPS, Sentinel G. SG3A0045BB0C
1	Shorepower disconnect	Shipyard, 100A
1	Active corrosion control system	Sentry Equipment, Corrosion Sentry
1	Fire control panel	Pyrogen
1	Automatic fire system arming switch	Pyrogen
1	Emergency fuel shut off pull	Shipyard
1	120/208vac circuit breaker panel	Square D
1	Storage battery condition display panel	Böning
1	Bilge pumps control panel	Superior Marine Service
1	Inverter/charging multi-function panel	Victron Energy
1	Storage battery series connector switch	ACR
1	24vdc circuit breaker panel	Superior Marine Service
1	Engine room ventilation visual panel	Delta T, DEC
1	Bilge level alarm panel	Böning
1	Tank levels monitor panel	Böning
1	Fire system control panel	Potter, PFC 4064
1	Main AC Distribution panel	Superior Marine Service

VESSEL CONDITIONS

ITEM/AREA	NOTES
Navigation, communication, data	New
Surfaces, accommodations	New
Surfaces, hull topsides	New
Surfaces, deckhouse exterior	New
Surfaces, deck exterior	New
Internal framing	New
Bilges	New
Guardrails	New
Ground Tackle	New
Mooring Equipment	New
Accommodations	New
Machinery	New
Electrical	New
Cleanliness of machinery spaces	Good
General housekeeping	Good

RECOMMENDATIONS

1	Review and test all primary and secondary systems prior to operational status.
2	Follow all Environmental requirements prior to operational status.
3	Routinely test all alarms, sensors and limit switches

SUITABILITY FOR SERVICE

As far as may be ascertained by general examination of the GOLDEN GATE, as she lay moored, and with no primary machinery in operation, it is the opinion of the undersigned that the vessel will be in satisfactory condition and suitable for the operation in the intended service upon completion of the above recommendations. This examination has been made without making removals, or opening of parts ordinarily concealed, or testing for tightness, or operating of machinery, and is subject to any conditions that would have been revealed if such procedures had been accomplished. Further, no determination of intact stability or inherent structural integrity has been made.

VALUATION

Fair Market Value is defined as the price at which a property would change hands between a willing buyer and willing seller, neither of which being under any compulsion to buy or sell and both having reasonable knowledge of relevant facts, with no unusual financing conditions, incentives or sub-market financing.

It is the opinion of the undersigned, by conditions found and market review regarding comparable vessels, that the Estimated Fair Market Value is determined as follows:

Fair Market Value – 2023 New Vessel as Delivered	\$6,900,000.00US
Estimated New Replacement Cost	\$8,200,000.00US

We reserve the right to amend our determination if conditions or damage not reported is found. We furthermore reserve the right to correct or amend our determinations as activities, or additional information is received or presented that may necessitate re-evaluation.

Enclosed forming part of this report are digital photographs taken by the undersigned at the time of survey and the content of which has not been altered in any way.

Survey and report are without prejudice to the question of liability and are subject to the terms and conditions of all interests as they may apply.

Submitted Respectfully,



Paul Fredrickson
Charles Taylor Marine Technical Services
Senior Marine Surveyor
1439 N Northlake Way
Seattle, WA 98103
T: +1 206-855-6088
M: +1 206-471-0474
paul.fredrickson@charlestaylor.com

ENCLOSURES –

Photo Log: GOLDEN GATE, 6-7 June 2023

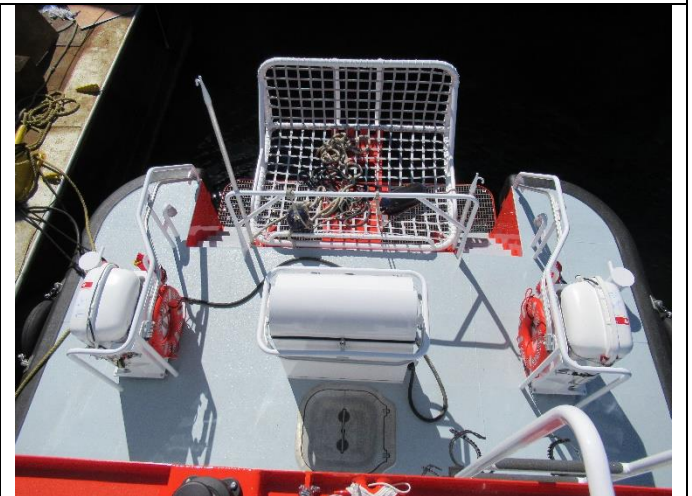
PHOTO LOG: GOLDEN GATE 6-7 JUNE 2023

DECKHOUSE, COMMAND STATION





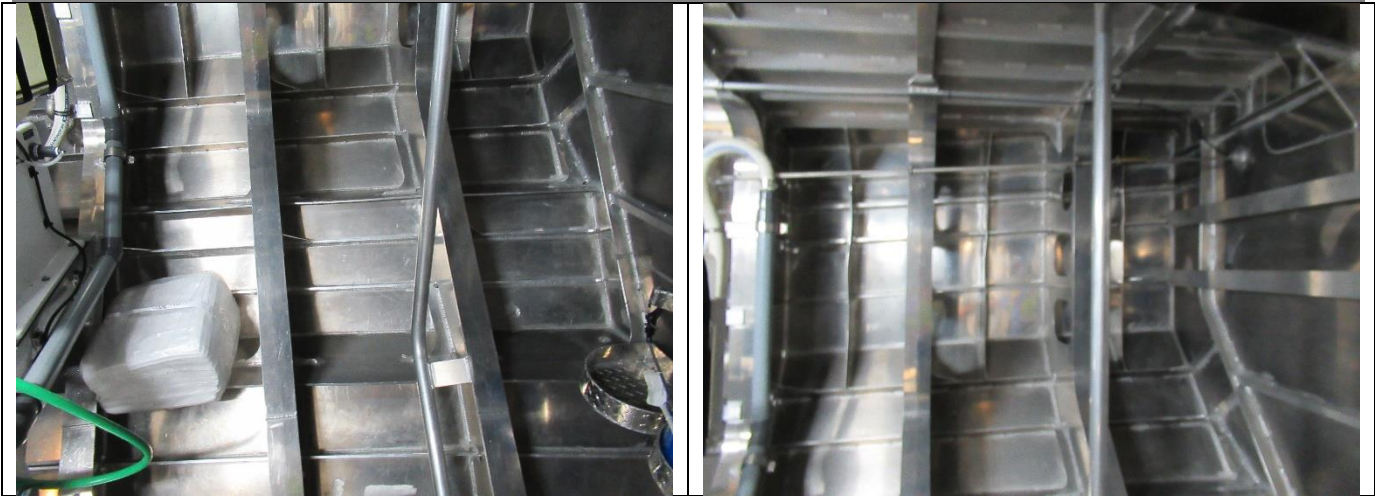
WEATHER MAIN DECK





LOWER DECK, FOREPEAK





LOWER DECK, ACCOMMODATIONS



LOWER DECK, MECHANICAL & ELECTRICAL





